



STEEL BALL VALVES



MODERN EUROPEAN QUALITY

Comparing features of BREEZE valves models

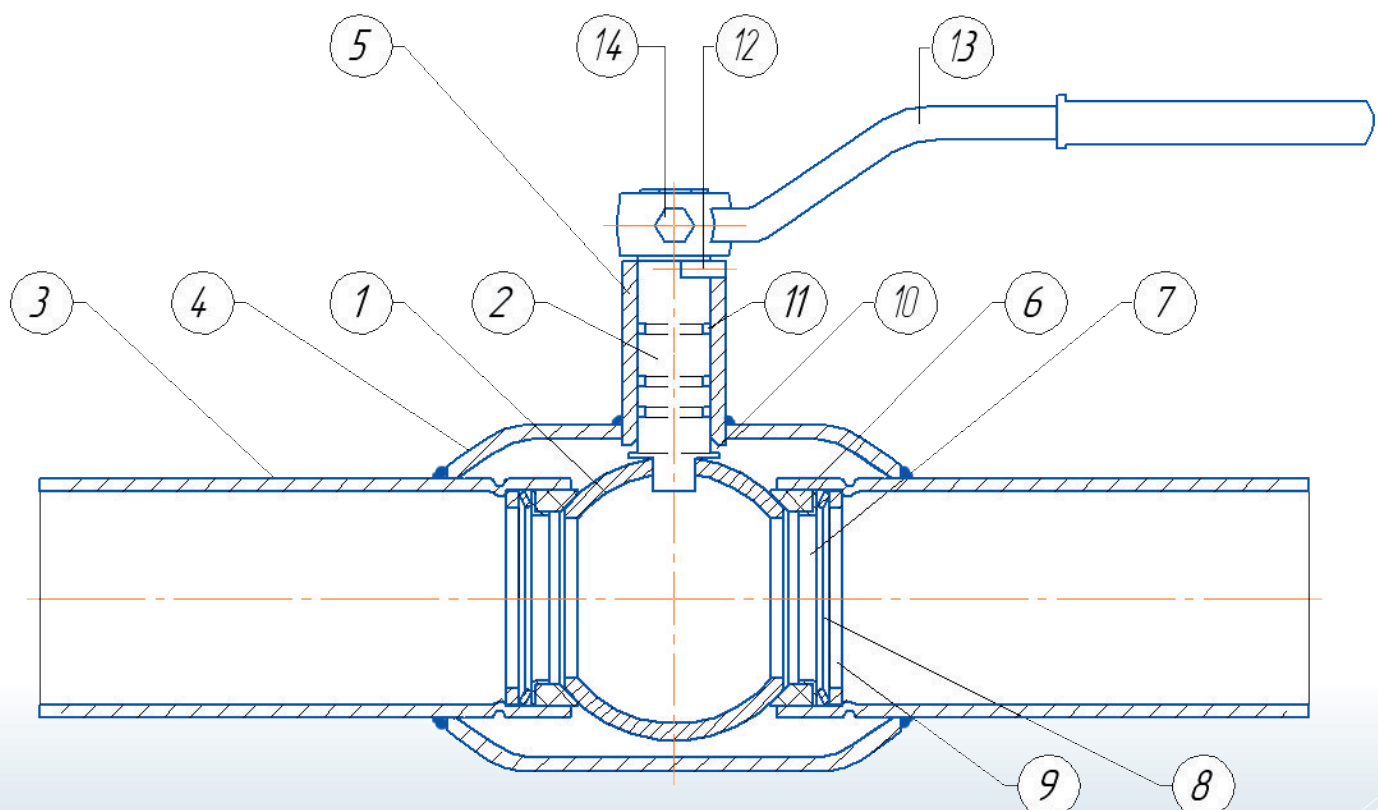
Model	DN	15	20	25	32	40	50	65	80	100	125	150	200	250	300	features	page
Type 31																16 PN, 25 PN, 40 PN	p. 6
Type 32																16 PN, 25 PN, 40 PN	p. 7
Type 33																16 PN	p. 8
Type 34																16 PN, 25 PN, 40 PN	p. 9
Type 39/1																16 PN, 25 PN	p. 15
Type 35																16 PN, 25 PN, 40 PN	p. 10
Type 37																16 PN, 25 PN, 40 PN	p. 12
Type 36																16 PN, 25 PN, 40 PN	p. 11
Type 38																16 PN, 25 PN, 40 PN	p. 13
Type 39																16 PN, 25 PN	p. 14
Type 41																16 PN	p. 16
Type 42																16 PN	p. 18
Type 64																25 PN	p. 19

Conventions

	Pressure class (PN)		Welding/welding
	Standard flow		Flange/flange
	Full flow		Flange/welding
	Can be made with a long stem for underground installation		Female/female
	Can be made with an ISO 5211 flange for manual gear or actuator		Catalog page number
	Face-to-face length is equal to length of gate valve		

The design features

- The design makes it easy to mount and to provide thermal insulation valve.
- Valves do not require maintenance (pull-up or lubrication).
- The stem is designed with protection against ejection, which provides safety of valves.
- Ball seal is made of carbonized PTFE (Carbon - 20%), which wear resistance is twice higher than plain PTFE, reliability index up to 7000 cycles and can extend lifespan.
- Spring washers are tightly pressing PTFE O-rings to the ball, which provides "A" grade leak tightness of shutter.
- The handle is detachable and can be easily permuted to 180 °.



Components and material

1. Ball:	X20CrNi72 EN 10222-5
2. Stem:	X20Cr13 1.4021 EN 10027-2
3. Extension pipes:	P265GH 1.0425 EN 100217-2
4. Body:	P265GH 1.0425 EN 100217-2
5. Stem bush:	P265GH 1.0425 EN 100217-2
6. Ball seal:	Carbonized PTFE (Carbon 20%)
7. Bush:	X6CrNi18-10 EN 10222-5
8. Spring washer:	1.1248 EN 10027-2
9. Seal washer:	S235JR 1.0037 EN 10027-2
10. Stem gasket:	PTFE
11. Stem seal:	FKM
12. Stud:	41Cr4 1.7035 EN 10027-2
13. Handle*:	S235JR 1.0037 EN 10027-2
14. Bolt:	1.0715 EN 10027-2

Application area:

- system of drinking and industrial water supply;
- heat supply system, heating and cooling;
- transportation system of natural gas and petroleum products.

* Mechanical gear is recommended for valves DN150 and DN200. Valves DN250 and higher - only with mechanical gear.

BREEZE valves with part-turn actuator according to EN ISO 5210 and 5211

BREEZE valves with part-turn actuator are marked by adding nine (9) to the main model designation. For example: BREEZE Valve Type 31 with actuator is marked as Type 931. Actuator connections meet all the EN ISO 5211 standard requirements.

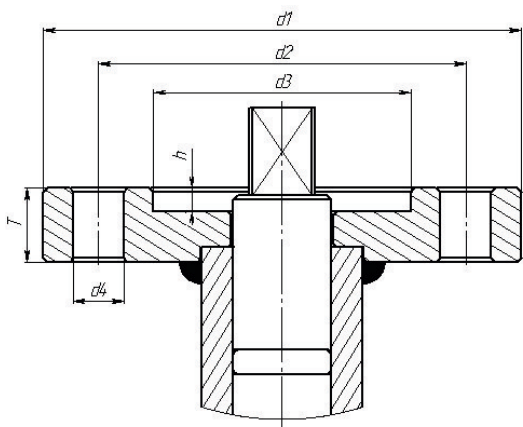
Maximum torque for BREEZE valves Type 941, Type 942, Type 964

DN	Flow diameter	Torque, N*m	ISO 5211 flange
25	25	15	EN ISO 5211-F05-N-L-9
32	32	15	EN ISO 5211-F05-N-L-9
40	40	50	EN ISO 5211-F07-N-L-11
50	50	50	EN ISO 5211-F07-N-L-11
65	50	50	EN ISO 5211-F07-N-L-11
65	65	100	EN ISO 5211-F07-N-L-17
80	80	100	EN ISO 5211-F07-N-L-17
100	80	100	EN ISO 5211-F07-N-L-17
125	100	170	EN ISO 5211-F10-N-L-19
150	100	170	EN ISO 5211-F10-N-L-19
200	150	380	EN ISO 5211-F12-N-L-27

Maximum torque for BREEZE valves Type 931, Type 932, Type 933, Type 934, Type 937, Type 938, Type 939, Type 939/1)

DN	Flow diameter	Torque, N*m	ISO 5211 flange
15	15	15	EN ISO 5211-F05-N-L-9
20	15	15	EN ISO 5211-F05-N-L-9
20	20	15	EN ISO 5211-F05-N-L-9
25	20	15	EN ISO 5211-F05-N-L-9
25	25	15	EN ISO 5211-F05-N-L-9
32	25	15	EN ISO 5211-F05-N-L-9
32	32	40	EN ISO 5211-F07-N-L-11
40	32	40	EN ISO 5211-F07-N-L-11
40	40	40	EN ISO 5211-F07-N-L-11
50	40	40	EN ISO 5211-F07-N-L-11
50	50	40	EN ISO 5211-F07-N-L-11
65	50	40	EN ISO 5211-F07-N-L-11
65	65	80	EN ISO 5211-F07-N-L-17
80	65	80	EN ISO 5211-F07-N-L-17
80	80	80	EN ISO 5211-F07-N-L-17
100	80	80	EN ISO 5211-F07-N-L-17
100	100	170	EN ISO 5211-F10-N-L-19
125	100	170	EN ISO 5211-F10-N-L-19
125	125	170	EN ISO 5211-F10-N-L-19
150	100	80	EN ISO 5211-F07-N-L-17
150	125	170	EN ISO 5211-F10-N-L-19
150	150	380	EN ISO 5211-F10-N-L-22
200	150	380	EN ISO 5211-F10-N-L-22
200	200	380	EN ISO 5211-F10-N-L-22

Geometrical parameters and EN ISO 5211 flanges designation



Пример обозначения: EN ISO 5211-F07-N-L-17

- EN ISO 5211 - standard designation
- F07 - flange size acc. to EN ISO 5211
- N - part-turn valve actuator attachment without spigot
- L - parallel square drive
- 17 - actual dimensions of the drive (in millimetres)

Flange	d1	d2	d3	d4	h	KCO*	T	Weight, kg
F05	65	35	50	7	3	4	10	0,2
F07	90	55	70	9	3	4	10	0,4
F10	125	70	102	12	3	4	14	1,1

* KCO - number of holes

Hydraulic resistance Kv, m³/h

DN	15	20	25	32	40	50	65	80	100	125	150	200	250	300
Kv	16	29	43	71	176	270	608	930	1430	2016	3140	6090	10350	17100

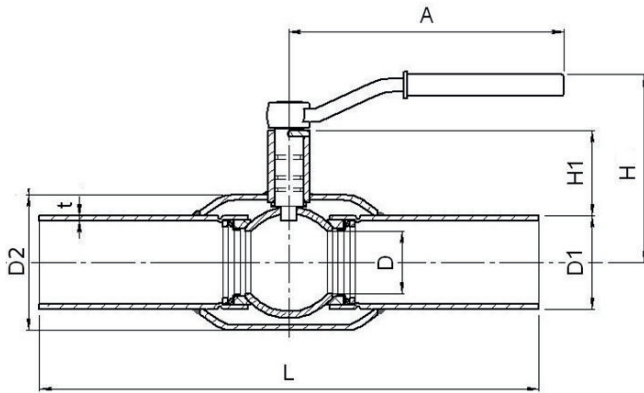
Testing of valves

Pressure tests, test procedures and acceptance criteria meet all requirements of EN 12266-1, GOST 21345, TU U 29.1-23392043-001. Each valve is tested by P10, P11, P12 test procedures according to appendix A of EN 12266-1 standard.

Acceptance criteria do not allow any signs of leakage - tightness class A according to EN 12266-1, tightness class A according to GOST 9544.

BREEZE Type 31 (standard flow, welding/welding)

PN 40 DN 15-50
PN 25 DN 65-300

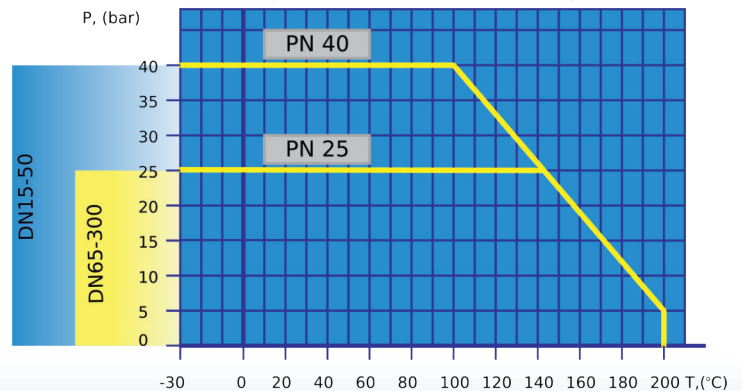


Materials and properties

Ball:	X20CrNi72 EN 10222-5
Stem:	X20Cr13 1.4021 EN 10027-2
Bush:	X6CrNi18-10 EN 10222-5
Body:	P265GH 1.0425 EN 100217-2
Spring washer:	1.1248 EN 10027-2
Seal washer, handle:	S235JR 1.0037 EN 10027-2
Ball seal:	Carbonized PTFE (Carbon 20%)
Stem gasket:	PTFE
Stem seal:	FKM
Impermeability:	"A" acc. with EN 12266-1
Reliability:	7000 cycles
Service:	10 years
Warranty:	18 months

Valves can be manufactured with a ISO 5211 flange.

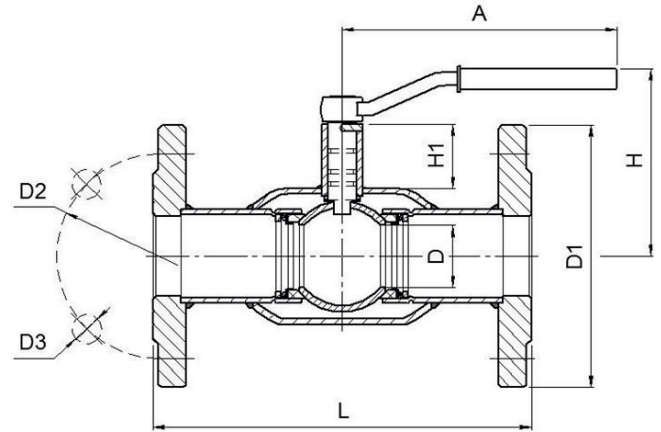
Maximum allowable pressure at different temperatures



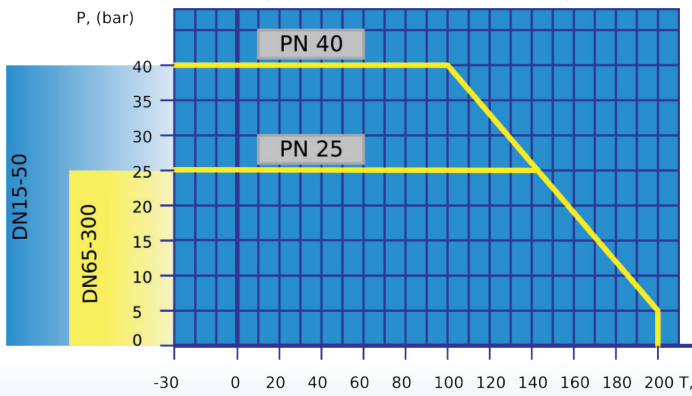
DN	PN	D	D1	D2	t	L	H	H1	A	Weight, kg
15	40	14	21,3	42	2,65	210	90	44	170	0,90
20	40	15	27	51	2,5	230	90	41,5	170	1,20
25	40	20	33,7	51	2,85	230	105	53	170	1,30
32	40	25	42,4	57	2,8	260	110	54	170	1,80
40	40	32	48	76	2,5	260	115	54,5	235	2,40
50	40	38	57	83	3	300	120	55	235	3,00
65	25	48	76	102	3,5	360	130	55,5	235	4,30
80	25	60	89	121	4	370	170	84,5	270	6,70
100	25	77	108	152	4,5	390	180	85	270	8,60
125	25	98	133	180	6	390	190	88,5	370	14,0
150	25	123	159	219	5	390	200	85,5	770	22,00
200	25	148	219	273	7	390	230	85	770	30,00
250	25	200	273	377	10	630	260	89	*	104,00
300	25	234	325	426	12	710	330	130	*	160,00

BREEZE Type 32 (standard flow, flange/flange)

PN 40 DN 15-50
PN 25 DN 65-300



Maximum allowable pressure at different temperatures



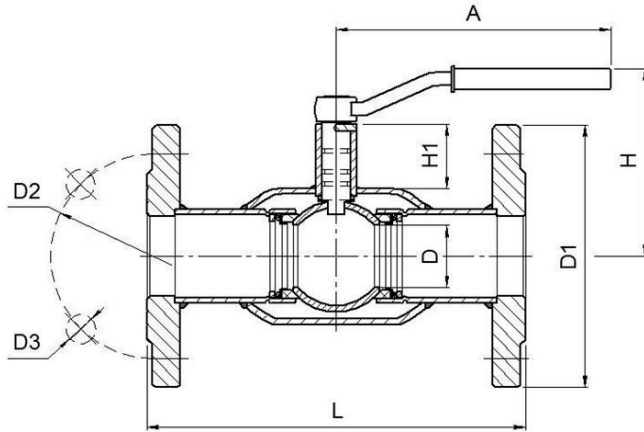
Materials and properties

- Ball:** X20CrNi72 EN 10222-5
 - Stem:** X20Cr13 1.4021 EN 10027-2
 - Bush:** X6CrNi18-10 EN 10222-5
 - Body:** P265GH 1.0425 EN 100217-2
 - Spring washer:** 1.1248 EN 10027-2
 - Seal washer, handle:** S235JR 1.0037 EN 10027-2
 - Ball seal:** Carbonized PTFE (Carbon 20%)
 - Stem gasket:** PTFE
 - Stem seal:** FKM
 - Impermeability:** "A" acc. with EN 12266-1
 - Reliability:** 7000 cycles
 - Service:** 10 years
 - Warranty:** 18 months
- Valves can be manufactured with a ISO 5211 flange.

DN	PN	D	D1	D2	D3	t	L	H	H1	A	n	Weight, kg
15	40	14	95	65	14	4,5	130	90	32,5	170	4	2,00
20	40	15	105	75	14	6	150	90	28	170	4	2,60
25	40	20	115	85	14	2,8	160	105	53	170	4	3,30
32	40	25	135	100	18	3,5	180	110	54	170	4	4,60
40	40	32	145	110	18	3	200	115	54	235	4	5,90
50	40	38	160	125	18	5	230	120	55	235	4	7,70
65	25	48	180	145	18	3,5	270	130	55	235	4	10,60
80	25	60	195	160	18	4	280	170	84	270	8	13,60
100	25	77	230	190	22	4	300	180	85	270	8	18,60
125	25	98	270	220	26	6	350	190	88	370	8	30,30
150	25	123	300	250	26	6	350	200	85	485	8	41,00
200	25	148	360	310	26	7	400	230	85	770	12	47,20
250	25	200	425	370	28	10	650	260	89	*	12	138,00
300	25	234	485	430	28	12	750	330	130	*	12	211,00

BREEZE Type 33 (standard flow, flange/flange)

PN 16 DN 50-300

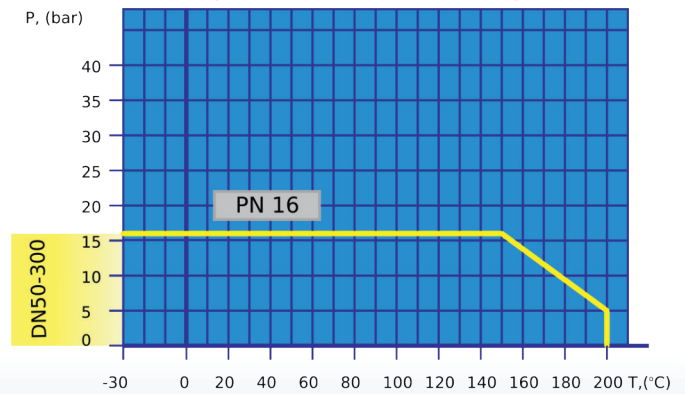


Materials and properties

Ball:	X20CrNi72 EN 10222-5
Stem:	X20Cr13 1.4021 EN 10027-2
Bush:	X6CrNi18-10 EN 10222-5
Body:	P265GH 1.0425 EN 100217-2
Spring washer:	1.1248 EN 10027-2
Seal washer, handle:	S235JR 1.0037 EN 10027-2
Ball seal:	Carbonized PTFE (Carbon 20%)
Stem gasket:	PTFE
Stem seal:	FKM
Impermeability:	"A" acc. with EN 12266-1
Reliability:	7000 cycles
Service:	10 years
Warranty:	18 months

Valves can be manufactured with a ISO 5211 flange.

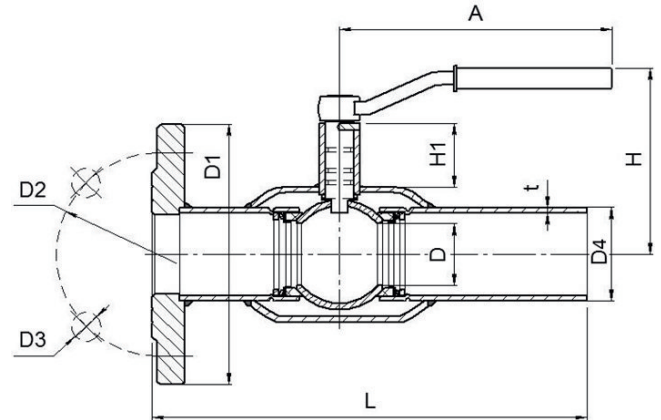
Maximum allowable pressure at different temperatures



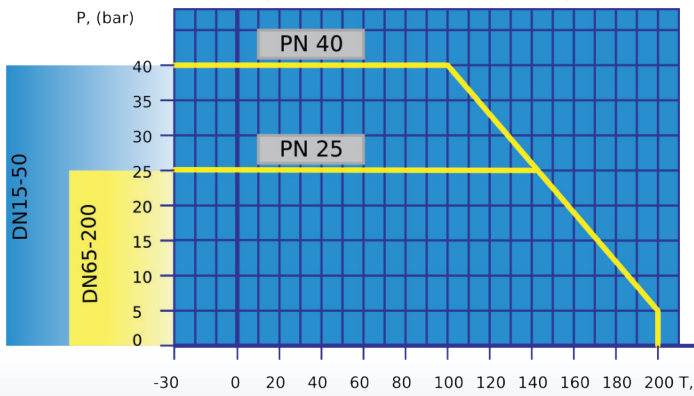
DN	PN	D	D1	D2	D3	t	L	H	H1	A	n	Weight, kg
50	16	38	160	125	18	5	180	120	55	235	4	6,40
65	16	48	180	145	18	3,5	190	130	55	235	4	8,70
80	16	60	195	160	18	4	210	170	84	270	8	11,50
100	16	77	215	180	18	4	230	180	85	270	8	15,00
125	16	98	245	210	18	6	350	190	88	370	8	24,00
150	16	98	280	240	22	6	280	200	85	485	8	29,20
150	16	123	280	240	22	6	350	200	85	485	8	33,00
200	16	148	335	295	22	7	400	230	89	770	12	54,00
250	16	200	405	355	26	10	650	260	89	*	12	130,00
300	16	234	460	410	26	12	750	330	130	*	12	197,00

BREEZE Type 34 (standard flow, welding/flange)

PN 40 DN 15-50
PN 25 DN 65-200



Maximum allowable pressure at different temperatures



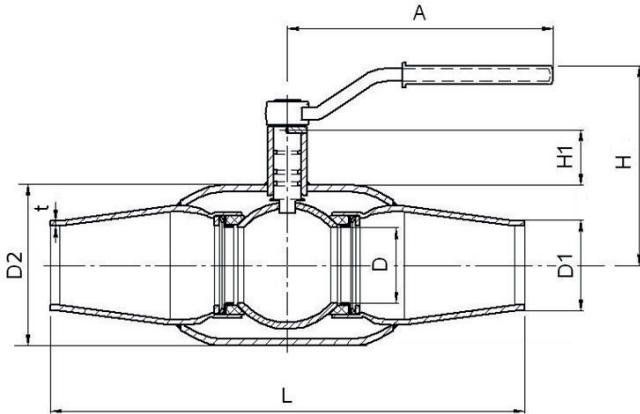
Materials and properties

- Ball:** X20CrNi72 EN 10222-5
 - Stem:** X20Cr13 1.4021 EN 10027-2
 - Bush:** X6CrNi18-10 EN 10222-5
 - Body:** P265GH 1.0425 EN 100217-2
 - Spring washer:** 1.1248 EN 10027-2
 - Seal washer, handle:** S235JR 1.0037 EN 10027-2
 - Ball seal:** Carbonized PTFE (Carbon 20%)
 - Stem gasket:** PTFE
 - Stem seal:** FKM
 - Impermeability:** "A" acc. with EN 12266-1
 - Reliability:** 7000 cycles
 - Service:** 10 years
 - Warranty:** 18 months
- Valves can be manufactured with a ISO 5211 flange.

DN	PN	D	D1	D2	D3	D4	t	L	H	H1	A	Weight, kg
15	40	14	95	65	14	21,3	2,5	190	90	26	170	1,50
20	40	20	105	75	14	27	2,5	195	90	25	170	1,90
25	40	20	115	85	14	33,7	2,85	195	105	35	170	2,10
32	40	25	135	100	18	42,4	2,8	220	110	37	170	3,40
40	40	32	145	110	18	48	2,5	230	115	35	235	4,00
50	40	38	160	125	18	57	3	265	120	37	235	6,00
65	25	48	180	145	18	76	3,5	315	130	35	235	6,80
80	25	60	195	160	18	89	4	325	170	55	270	9,80
100	25	77	230	190	22	108	4,5	345	180	50	270	13,80
125	25	98	270	220	26	133	6	370	190	53	370	19,40
150	25	123	300	250	26	159	5	370	200	48	485	30,00
200	25	148	360	310	26	219	7	395	230	68	770	40,60

BREEZE Type 35 (full flow, welding/welding)

PN 40 DN 25-50
PN 25 DN 65-200

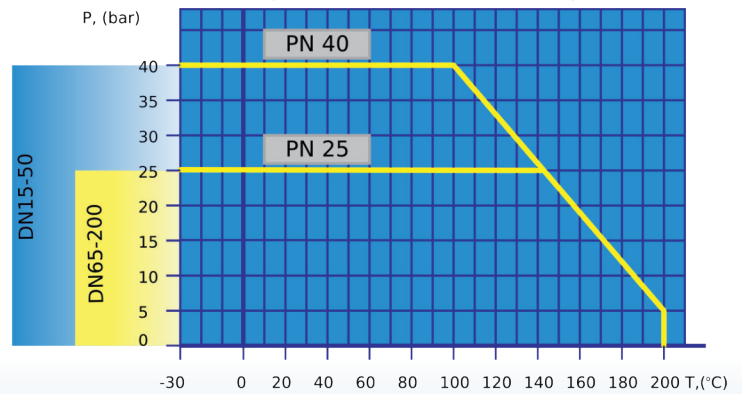


Materials and properties

Ball:	X20CrNi72 EN 10222-5
Stem:	X20Cr13 1.4021 EN 10027-2
Bush:	X6CrNi18-10 EN 10222-5
Body:	P265GH 1.0425 EN 100217-2
Spring washer:	1.1248 EN 10027-2
Seal washer, handle:	S235JR 1.0037 EN 10027-2
Ball seal:	Carbonized PTFE (Carbon 20%)
Stem gasket:	PTFE
Stem seal:	FKM
Impermeability:	"A" acc. with EN 12266-1
Reliability:	7000 cycles
Service:	10 years
Warranty:	18 months

Valves can be manufactured with a ISO 5211 flange.

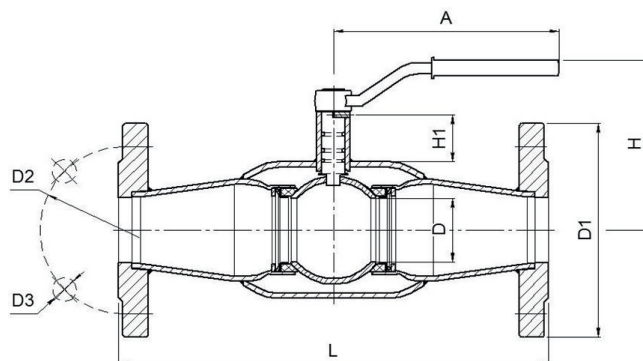
Maximum allowable pressure at different temperatures



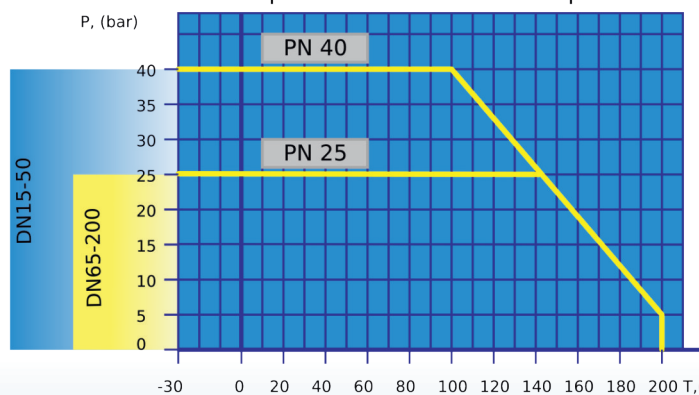
DN	PN	D	D1	D2	t	L	H	H1	A	Weight, kg
25	40	25	33,7	57	3	230	110	37	170	1,50
32	40	32	42,4	76	3	260	115	35	170	1,80
40	40	38	48	83	5	260	120	37	235	2,00
50	40	48	57	102	3,5	300	130	35	235	3,40
65	25	60	76	121	4	340	170	58	235	6,10
80	25	77	89	152	4	370	180	55	270	8,90
100	25	98	108	180	6	450	190	48	270	13,80
125	25	123	133	219	6	520	200	42	370	20,20
150	25	148	219	273	7	560	230	68	485	46,00
200	25	200	273	377	9	620	360	50	485	110,00

BREEZE Type 36 (full flow, flange/flange)

PN 40 DN 25-50
PN 25 DN 65-200



Maximum allowable pressure at different temperatures



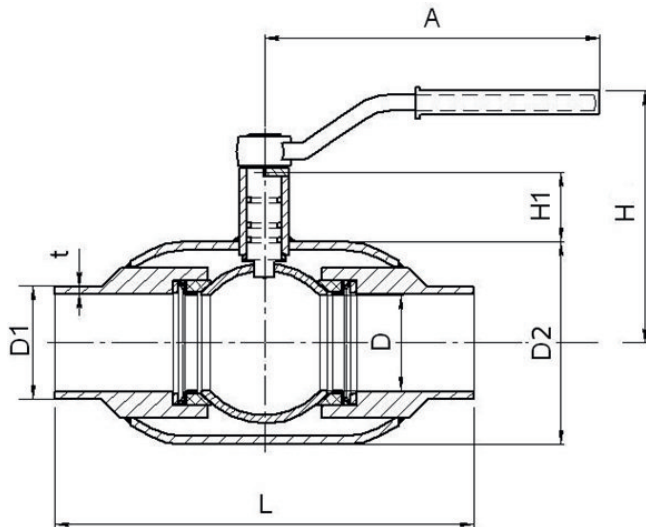
Materials and properties

- Ball:** X20CrNi72 EN 10222-5
 - Stem:** X20Cr13 1.4021 EN 10027-2
 - Bush:** X6CrNi18-10 EN 10222-5
 - Body:** P265GH 1.0425 EN 100217-2
 - Spring washer:** 1.1248 EN 10027-2
 - Seal washer, handle:** S235JR 1.0037 EN 10027-2
 - Ball seal:** Carbonized PTFE (Carbon 20%)
 - Stem gasket:** PTFE
 - Stem seal:** FKM
 - Impermeability:** "A" acc. with EN 12266-1
 - Reliability:** 7000 cycles
 - Service:** 10 years
 - Warranty:** 18 months
- Valves can be manufactured with a ISO 5211 flange.

DN	PN	D	D1	D2	D3	t	L	H	H1	A	n	Weight, kg
25	40	25	115	85	14	3	250	110	37	170	4	4,20
32	40	32	135	100	18	3	280	115	35	170	4	5,70
40	40	38	145	110	18	5	280	120	37	235	4	6,50
50	40	48	160	125	18	3,5	320	130	35	235	4	9,10
65	25	60	180	145	18	4	360	170	58	235	4	13,50
80	25	77	195	160	18	4	390	180	55	270	8	16,90
100	25	98	230	190	22	6	470	190	48	270	8	23,70
125	25	123	270	220	26	6	540	200	42	370	8	32,50
150	25	148	300	250	26	7	580	230	68	485	8	58,00
200	25	200	360	310	26	9	640	360	50	485	12	125,00

BREEZE Type 37 (full flow, welding/welding)

PN 40 DN 15-50
PN 25 DN 65-200



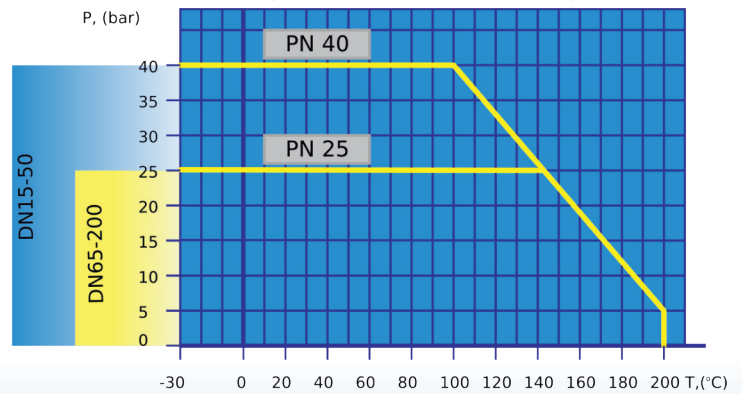
Materials and properties

Ball:	X20CrNi72 EN 10222-5
Stem:	X20Cr13 1.4021 EN 10027-2
Bush:	X6CrNi18-10 EN 10222-5
Body:	P265GH 1.0425 EN 100217-2
Spring washer:	1.1248 EN 10027-2
Seal washer, handle:	S235JR 1.0037 EN 10027-2
Ball seal:	Carbonized PTFE (Carbon 20%)
Stem gasket:	PTFE
Stem seal:	FKM
Impermeability:	"A" acc. with EN 12266-1
Reliability:	7000 cycles
Service:	10 years
Warranty:	18 months

Valves can be manufactured with a ISO 5211 flange.



Maximum allowable pressure at different temperatures



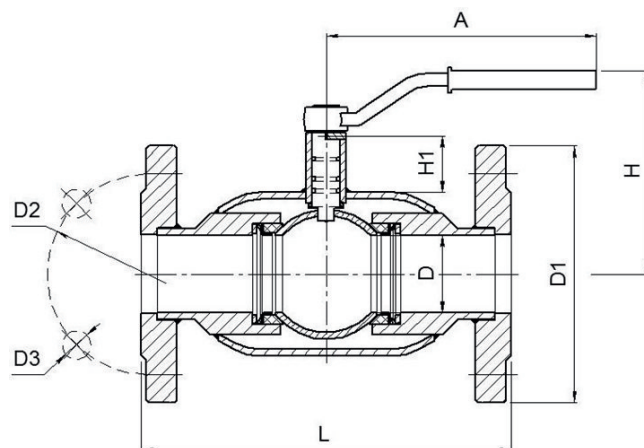
DN	PN	D	D1	D2	t	L	H	H1	A	Weight, kg
15	40	14	21,3	42	2,65	130	90	28	170	0,90
20	40	20	27	51	2,5	130	90	28	170	1,20
25	40	25	33,7	57	2,85	140	110	37	170	1,40
32	40	32	42,4	76	3,2	160	115	35	170	2,20
40	40	38	48	83	3,5	180	120	37	235	2,60
50	40	48	57	102	4	210	130	35	235	4,20
65	25	60	76	121	4	250	170	58	235	6,90
80	25	77	89	152	4,5	260	180	55	270	8,90
100	25	98	108	180	5	300	190	48	270	14,20
125	25	123	133	219	6	325	200	42	370	23,70
150	25	150	159	273	7	400	230	68	485	28,50
200	25	200	219	377	9	460	360	50	485	58,00

excellent balance between price & quality

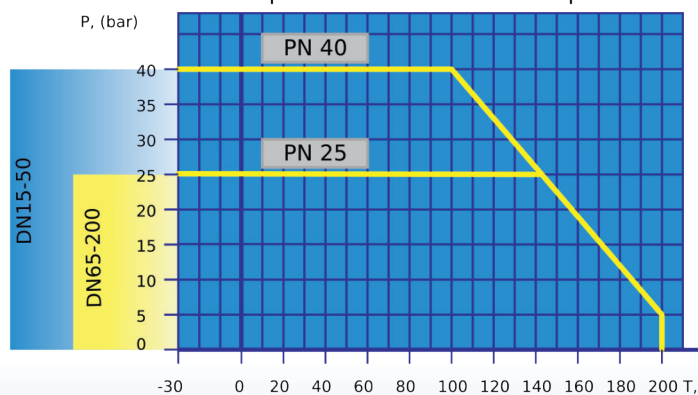


BREEZE Type 38
(full flow, flange/flange)

PN 40 DN 15-50
PN 25 DN 65-200



Maximum allowable pressure at different temperatures



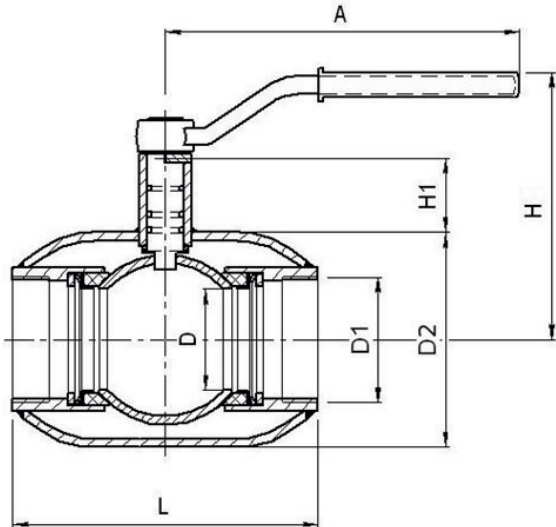
Materials and properties

- Ball:** X20CrNi72 EN 10222-5
 - Stem:** X20Cr13 1.4021 EN 10027-2
 - Bush:** X6CrNi18-10 EN 10222-5
 - Body:** P265GH 1.0425 EN 100217-2
 - Spring washer:** 1.1248 EN 10027-2
 - Seal washer, handle:** S235JR 1.0037 EN 10027-2
 - Ball seal:** Carbonized PTFE (Carbon 20%)
 - Stem gasket:** PTFE
 - Stem seal:** FKM
 - Impermeability:** "A" acc. with EN 12266-1
 - Reliability:** 7000 cycles
 - Service:** 10 years
 - Warranty:** 18 months
- Valves can be manufactured with a ISO 5211 flange.

DN	PN	D	D1	D2	t	L	H	H1	A	n	Weight, kg
15	40	14	95	65	2,65	140	90	28	170	4	2,00
20	40	20	105	75	2,5	150	90	28	170	4	2,60
25	40	25	115	85	2,85	160	110	37	170	4	3,90
32	40	32	135	100	3,2	180	115	35	170	4	5,40
40	40	38	145	110	3,5	200	120	37	235	4	6,20
50	40	48	160	125	4	230	130	35	235	4	9,70
65	25	60	180	145	4	270	170	58	235	4	13,80
80	25	77	195	160	4,5	280	180	55	270	8	17,40
100	25	98	230	190	5	300	190	48	270	8	24,50
125	25	123	270	220	6	325	200	42	370	8	35,80
150	25	150	300	250	7	400	230	68	485	8	42,50
200	25	200	360	310	9	460	360	50	485	12	75,00

BREEZE Type 39
(full flow, female/female)

PN 25 DN 15-100

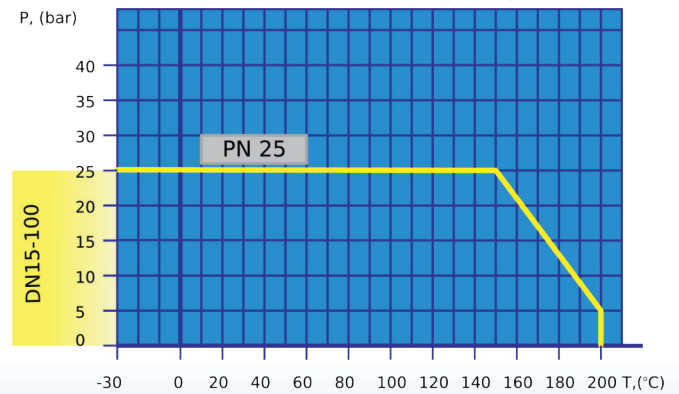


Materials and properties

- Ball:** X20CrNi72 EN 10222-5
- Stem:** X20Cr13 1.4021 EN 10027-2
- Bush:** X6CrNi18-10 EN 10222-5
- Body:** P265GH 1.0425 EN 100217-2
- Spring washer:** 1.1248 EN 10027-2
- Seal washer, handle:** S235JR 1.0037 EN 10027-2
- Ball seal:** Carbonized PTFE (Carbon 20%)
- Stem gasket:** PTFE
- Stem seal:** FKM
- Impermeability:** "A" acc. with EN 12266-1
- Reliability:** 7000 cycles
- Service:** 10 years
- Warranty:** 18 months

Valves can be manufactured with a ISO 5211 flange.

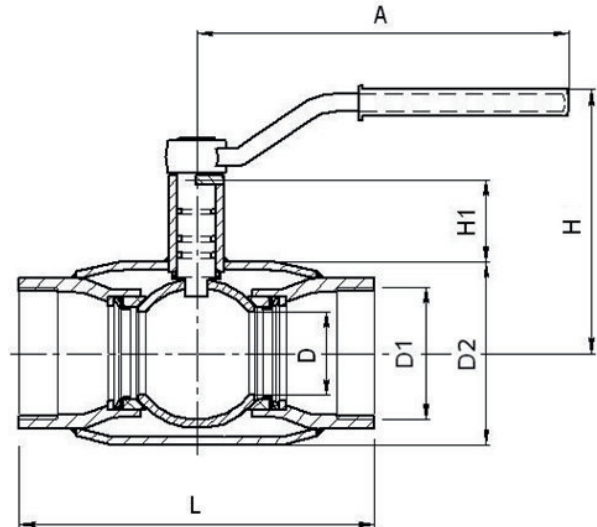
Maximum allowable pressure at different temperatures



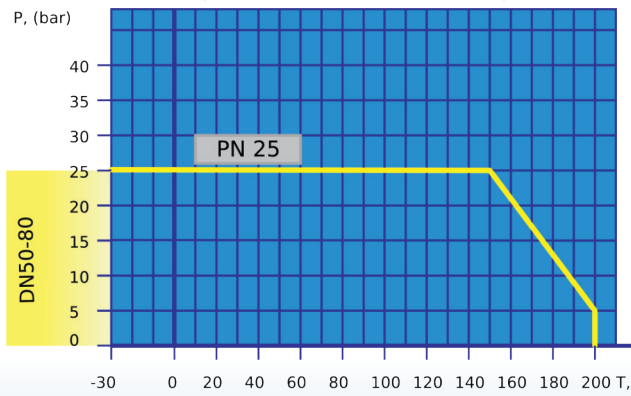
DN	PN	D	D1	D2	t	L	H	H1	A	Weight, kg
15	25	14	G 1/2"	42	4,5	105	90	28	170	0,80
20	25	20	G 3/4"	51	5	105	90	28	170	1,00
25	25	25	G 1"	57	6	110	110	37	170	1,30
32	25	32	G 1 1/4"	76	6	115	115	35	170	1,90
40	25	38	G 1 1/2"	83	6	120	120	37	235	2,00
50	25	48	G 2"	102	6	145	130	35	235	3,00
65	25	60	G 2 1/2"	121	6	165	170	58	235	5,20
80	25	77	G 3"	152	14	190	180	55	270	7,50
100	25	98	G 4"	180	13,5	230	190	48	270	10,00

BREEZE Type 39/1 (standard flow, female/female)

PN 25 DN 50-80



Maximum allowable pressure at different temperatures



Materials and properties

- Ball:** X20CrNi72 EN 10222-5
 - Stem:** X20Cr13 1.4021 EN 10027-2
 - Bush:** X6CrNi18-10 EN 10222-5
 - Body:** P265GH 1.0425 EN 100217-2
 - Spring washer:** 1.1248 EN 10027-2
 - Seal washer, handle:** S235JR 1.0037 EN 10027-2
 - Ball seal:** Carbonized PTFE (Carbon 20%)
 - Stem gasket:** PTFE
 - Stem seal:** FKM
 - Impermeability:** "A" acc. with EN 12266-1
 - Reliability:** 7000 cycles
 - Service:** 10 years
 - Warranty:** 18 months
- Valves can be manufactured with a ISO 5211 flange.

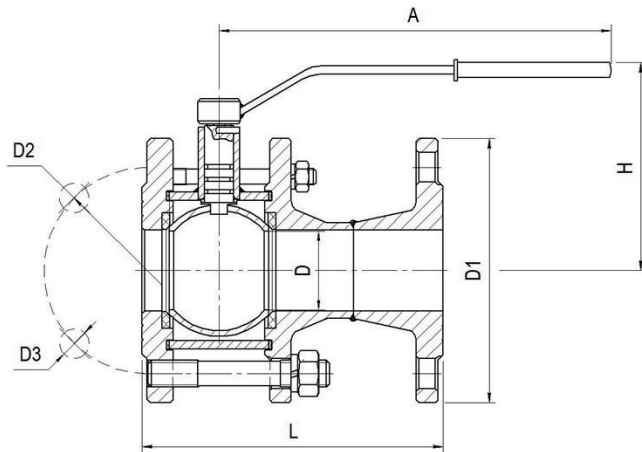
DN	PN	D	D1	D2	t	L	H	H1	A	Weight, kg
50	25	38	G 2"	83	6	160	120	37	235	2,60
65	25	48	G 2½"	102	6	190	130	35	235	3,50
80	25	60	G 3"	121	6	215	170	58	270	4,50

BREEZE Type 41 (flange/flange)

PN 16 DN 50-150



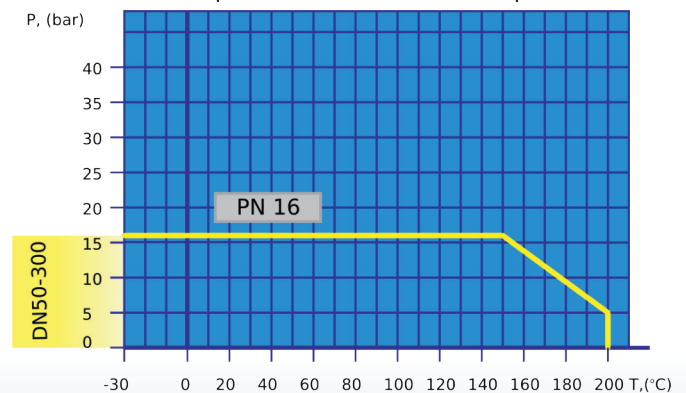
16
PN



Materials and properties

Ball:	X20CrNi72 EN 10222-5
Stem:	X20Cr13 1.4021 EN 10027-2
Bush:	X6CrNi18-10 EN 10222-5
Body:	P265GH 1.0425 EN 100217-2
Ball seal:	Carbonized PTFE (Carbon 20%)
Stem gasket:	PTFE
Stem seal:	FKM
Impermeability:	"A" acc. with EN 12266-1
Reliability:	2500 cycles
Service:	10 years
Warranty:	18 months

Maximum allowable pressure at different temperatures



Valves can be manufactured with a ISO 5211 flange.

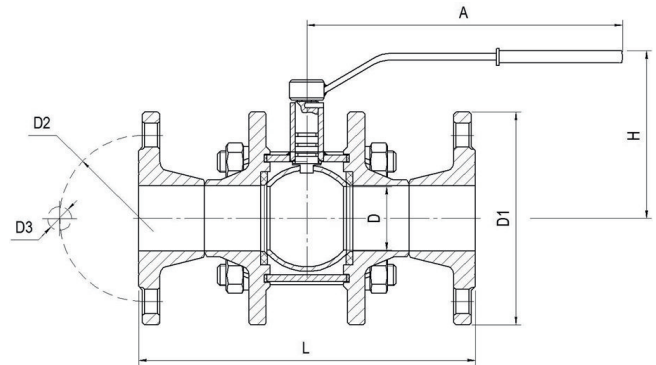
DN	PN	D	D1	D2	D3	L	H	A	n	Weight, kg
50	16	48	160	125	18	180	115	235	4	8,80
65	16	48	180	145	18	190	115	235	4	13,40
65	16	60	180	145	18	190	141	270	4	14,50
80	16	78	195	160	18	210	150	270	8	15,50
100	16	78	215	180	18	230	150	270	8	17,90
125	16	100	245	210	18	255	194	370	8	32,50
150	16	100	280	240	22	280	194	485	8	38,70
200	16	150	335	295	22	330	210	485	12	88,00

**BREEZE Type 41
(flange/flange)**

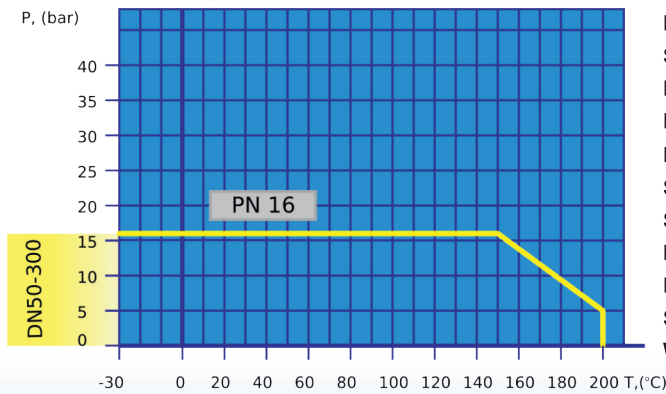
PN 16 DN 100-300



**16
PN**



Maximum allowable pressure at different temperatures



Materials and properties

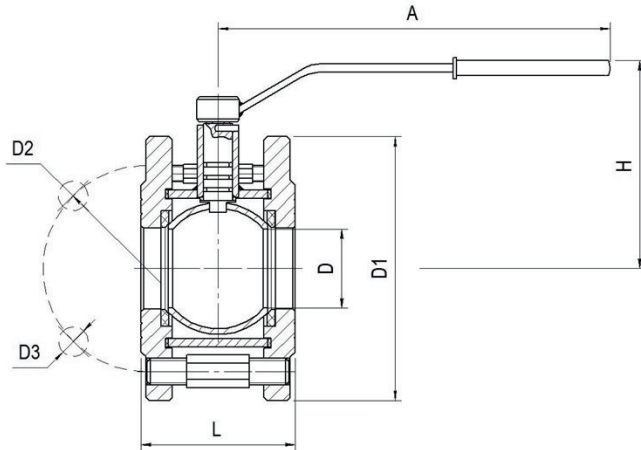
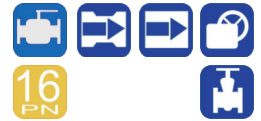
- Ball:** X20CrNi72 EN 10222-5
- Stem:** X20Cr13 1.4021 EN 10027-2
- Bush:** X6CrNi18-10 EN 10222-5
- Body:** P265GH 1.0425 EN 100217-2
- Ball seal:** Carbonized PTFE (Carbon 20%)
- Stem gasket:** PTFE
- Stem seal:** FKM
- Impermeability:** "A" acc. with EN 12266-1
- Reliability:** 2500 cycles
- Service:** 10 years
- Warranty:** 18 months

Valves can be manufactured with a ISO 5211 flange.

DN	PN	D	D1	D2	D3	L	H	A	n	Weight, kg
100	16	100	215	180	18	350	194	370	8	36,00
150	16	150	280	240	22	390	210	*	8	78,30
200	16	200	335	295	22	460	290	*	12	155,00
250	16	200	405	355	26	540	290	*	12	175,00
250	16	250	405	355	26	540	336	*	12	260,00
300	16	250	460	410	26	610	336	*	12	288,00

BREEZE Type 42 (flange/flange)

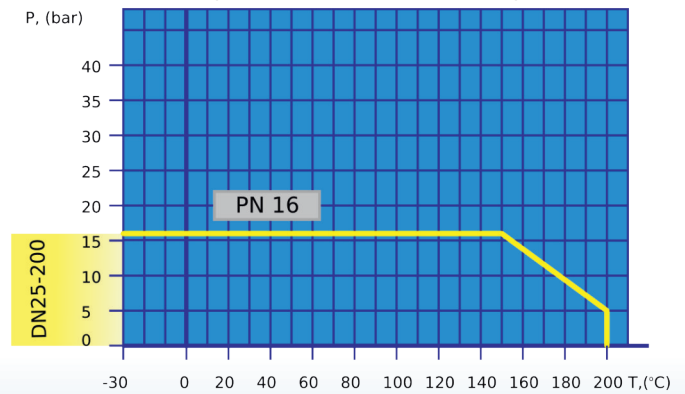
PN 16 DN 25-200



Materials and properties

Ball:	X20CrNi72 EN 10222-5
Stem:	X20Cr13 1.4021 EN 10027-2
Bush:	X6CrNi18-10 EN 10222-5
Body:	P265GH 1.0425 EN 100217-2
Ball seal:	Carbonized PTFE (Carbon 20%)
Stem gasket:	PTFE
Stem seal:	FKM
Impermeability:	"A" acc. with EN 12266-1
Reliability:	2500 cycles
Service:	10 years
Warranty:	18 months

Maximum allowable pressure at different temperatures



Valves can be manufactured with a ISO 5211 flange.

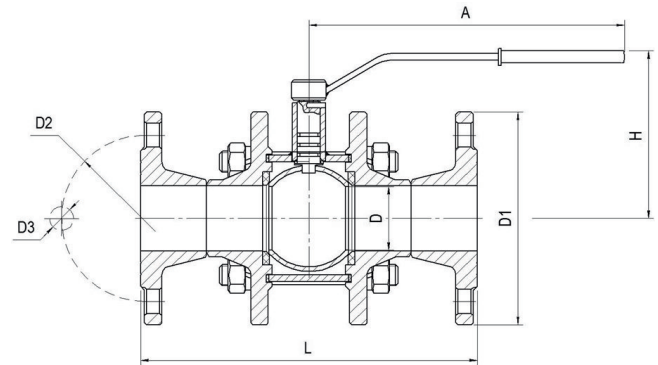
DN	PN	D	D1	D2	D3	L	H	A	n	Weight, kg
25	16	25	115	85	14	66	90	170	4	2,70
32	16	30	135	100	18	73	100	170	4	3,50
40	16	38	145	110	18	84	120	170	4	4,60
50	16	48	160	125	18	97	125	235	4	6,30
65	16	48	180	145	18	99	125	235	4	8,30
65	16	60	180	145	18	119	150	270	4	9,30
80	16	78	195	160	18	125	150	270	8	10,10
100	16	78	215	180	18	125	150	270	8	12,50
125	16	100	245	210	18	170	180	370	8	22,50
150	16	100	280	240	22	170	180	485	8	27,20
200	16	148	335	295	22	225	210	485	12	59,00

**BREEZE Type 64
(flange/flange)**

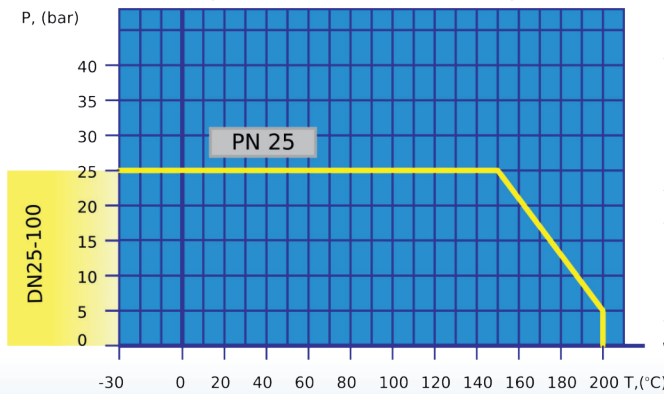
PN 25 DN 25-100



**25
PN**



Maximum allowable pressure at different temperatures



Materials and properties

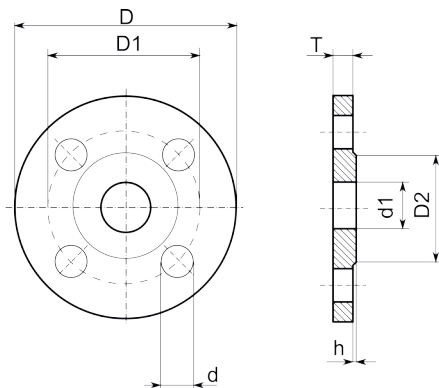
- Ball:** X20CrNi72 EN 10222-5
- Stem:** X20Cr13 1.4021 EN 10027-2
- Bush:** X6CrNi18-10 EN 10222-5
- Body:** P265GH 1.0425 EN 100217-2
- Ball seal:** Carbonized PTFE (Carbon 20%)
- Stem gasket:** PTFE
- Stem seal:** FKM
- Impermeability:** "A" acc. with EN 12266-1
- Reliability:** 2500 cycles
- Service:** 10 years
- Warranty:** 18 months

Valves can be manufactured with a ISO 5211 flange.

DN	PN	D	D1	D2	D3	L	H	A	n	Weight, kg
25	25	25	115	85	14	165	92	170	4	6,00
32	25	30	135	100	18	180	100	170	4	7,10
40	25	38	145	110	18	190	106	170	4	8,40
50	25	48	160	125	18	250	115	235	4	13,00
80	25	78	195	160	18	280	150	270	8	21,00
100	25	78	230	190	18	300	150	270	8	26,00

Flange BS EN 1092-1 Type 01

PN 25 / 16 / 10 DN 15-200



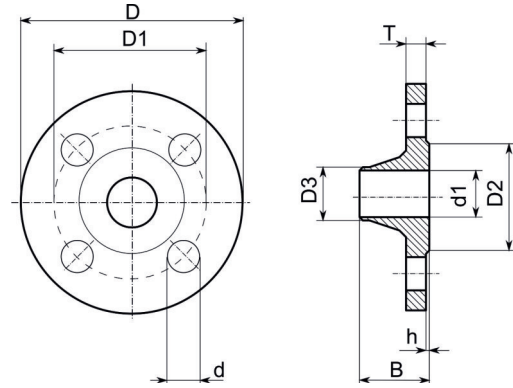
Material: GP240GH 1.0619
 Standart: EN 1092
 Type: 01
 Surface type: B

DN	PN	D	D1	D2	d1	T	h	d	n	Weight
15	10	95	65	47	19	10	2	14	4	0,51
15	16	95	65	47	19	12	2	14	4	0,61
15	25	95	65	47	19	14	2	14	4	0,70
20	10	105	75	58	26	12	2	14	4	0,74
20	16	105	75	58	26	14	2	14	4	0,86
20	25	105	75	58	26	16	2	14	4	0,98
25	10	115	85	68	33	12	2	14	4	0,89
25	16	115	85	68	33	16	2	14	4	1,17
25	25	115	85	68	33	16	2	14	4	1,17
32	10	135	100	78	39	14	2	18	4	1,40
32	16	135	100	78	39	16	2	18	4	1,58
32	25	135	100	78	39	18	2	18	4	1,77
40	10	145	110	88	46	15	3	18	4	1,71
40	16	145	110	88	46	17	3	18	4	1,96
40	25	145	110	88	46	19	3	18	4	2,18
50	10	160	125	102	59	15	3	18	4	2,06
50	16	160	125	102	59	19	3	18	4	2,58
50	25	160	125	102	59	21	3	18	4	2,71
65	10	180	145	122	78	17	3	18	4	2,80
65	16	180	145	122	78	21	3	18	4	3,42
65	25	180	145	122	78	21	3	18	8	3,22
80	10	195	160	133	91	17	3	18	4	3,19
80	16	195	160	133	91	21	3	18	8	3,71
80	25	195	160	133	91	23	3	18	8	4,06
100	10	215	180	158	110	19	3	18	8	3,96
100	16	215	180	158	110	23	3	18	8	4,73
100	25	230	190	158	110	25	3	22	8	5,92
125	10	245	210	184	135	21	3	18	8	5,40
125	16	245	210	184	135	25	3	18	8	6,38
125	25	270	220	184	135	27	3	26	8	8,26
150	10	280	240	212	161	21	3	22	8	6,62
150	16	280	240	212	161	25	3	22	8	7,81
150	25	300	250	212	161	27	3	26	8	10,51
200	10	335	295	268	222	21	3	22	8	8,05
200	16	335	295	268	222	27	3	22	12	10,10
200	25	360	310	268	222	29	3	26	12	13,34

Flange BS EN 1092-1 Type 11

PN 40 / 25 / 16 DN 15-200

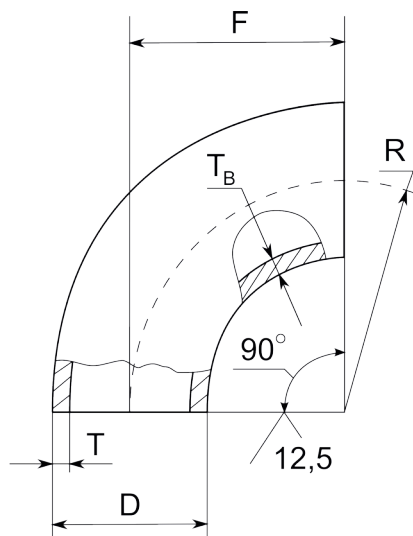
Material: GP240GH 1.0619
Standart: EN 1092
Type: 11
Surface type: B



DN	PN	D	D1	D2	d1	T	h	d	n	Weight
15	16	95	65	47	12	12	2	14	4	0,68
20	16	105	75	58	18	12	2	14	4	0,87
25	16	115	85	68	25	12	2	14	4	1,05
32	16	135	100	78	31	13	2	18	4	1,54
40	16	145	110	88	38	13	3	18	4	1,85
50	16	160	125	102	49	13	3	18	4	2,28
65	16	180	145	122	66	15	3	18	4	3,19
80	16	195	160	133	78	17	3	18	8	4,21
100	16	215	180	158	96	17	3	18	8	4,90
125	16	245	210	184	121	19	3	18	8	6,75
150	16	280	240	212	146	19	3	22	8	8,30
200	16	335	295	268	202	21	3	22	12	11,79
15	25	95	65	47	12	14	2	14	4	0,79
20	25	105	75	58	18	14	2	14	4	0,97
25	25	115	85	68	25	14	2	14	4	1,18
32	25	135	100	78	31	16	2	18	4	1,83
40	25	145	110	88	38	16	3	18	4	2,19
50	25	160	125	102	49	17	3	18	4	2,78
65	25	180	145	122	66	19	3	18	8	3,71
80	25	195	160	133	78	19	3	18	8	4,44
100	25	230	190	158	96	21	3	22	8	6,51
125	25	270	220	184	121	23	3	26	8	9,41
150	25	300	250	212	146	25	3	26	8	12,52
200	25	360	310	268	202	27	3	26	12	17,44
15	40	95	65	47	12	14	2	14	4	0,79
20	40	105	75	58	18	14	2	14	4	0,97
25	40	115	85	68	25	14	2	14	4	1,18
32	40	135	100	78	31	16	2	18	4	1,83
40	40	145	110	88	38	16	3	18	4	2,19
50	40	160	125	102	48	17	3	18	4	2,81
65	40	180	145	122	66	19	3	18	8	3,71
80	40	195	160	133	78	21	3	18	8	4,80
100	40	230	190	158	96	23	3	22	8	7,40
125	40	270	220	184	120	25	3	26	8	10,00
150	40	300	250	212	145	27	3	26	8	13,03
200	40	375	320	268	200	35	3	30	12	24,44

Elbow ISO 3419

PN 63 DN 20-200 PN 63 DN 50-150



Material:
Standart:

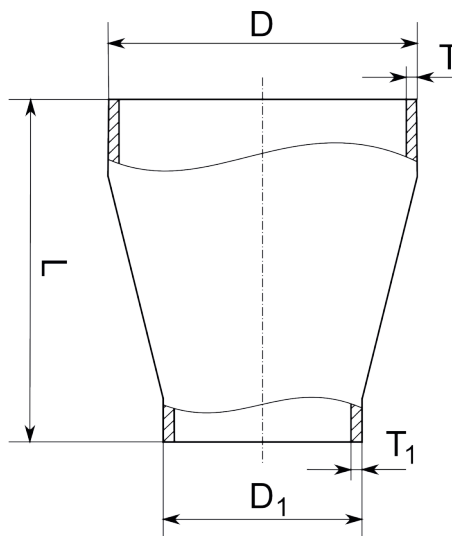
P265GH 1.0425 EN 100217-2
ISO 3419

Тип	D	Flow diameter, mm	T	F	Weight, kg
3D	28	20	3,20	29	0,08
3D	34	25	3,20	38	0,16
3D	42	32	3,20	48	0,26
3D	48	40	4,00	57	0,37
3D	45	38	4,00	60	0,40
3D	57	50	3,00	75	0,50
3D	57	50	4,00	75	0,70
3D	60	50	3,00	76	0,50
3D	76	65	3,50	100	1,00
3D	76	65	6,00	100	1,70
3D	89	80	4,00	120	1,50
3D	89	80	6,00	120	2,30
3D	108	100	4,00	150	2,50
3D	114	100	4,00	150	2,60
3D	133	125	4,00	190	3,80
3D	133	125	5,00	190	4,80
3D	159	150	5,00	225	6,70
3D	159	150	6,00	225	8,10
3D	219	200	6,00	300	15,00
3D	219	200	8,00	300	20,00
2D	57	50	3,0	50	0,4
2D	76	65	3,50	65	0,9
2D	89	80	4,00	80	1,3
2D	108	100	4,00	100	2,1
2D	133	125	4,00	125	3,0
2D	159	150	5,00	150	4,5

**Concentric reducer
ISO 3419**

PN 63 DN 15-200

Material: P265GH 1.0425 EN 100217-2
Standart: ISO 3419

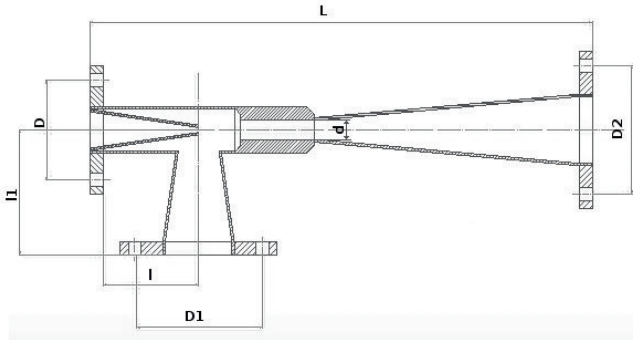


D	D1	L	T	T1	Weight, kg
25	21	30	3,2	3,2	0,07
32	21	30	3,2	3,2	0,12
32	25	30	3,2	3,2	0,12
38	21	30	3,5	4,0	0,15
38	25	30	3,0	3,0	0,20
38	32	30	4,0	4,0	0,20
45	25	30	3,5	4,0	0,20
45	32	30	3,0	3,5	0,20
57	32	45	4,0	4,5	0,30
57	38	45	4,0	4,0	0,30
57	45	60	4,0	4,0	0,30
76	45	70	4,0	4,0	0,40
76	57	70	4,0	4,0	0,40
89	57	75	4,0	4,0	0,60
89	76	75	4,0	4,0	0,60
108	76	80	4,0	4,0	0,90
108	89	80	4,0	4,0	0,90
133	76	100	5,0	5,0	1,60
133	89	100	5,0	5,0	1,30
133	108	100	6,0	7,0	1,60
159	108	130	5,0	6,0	2,30
159	133	130	5,0	6,0	2,30
219	159	140	9,0	11,0	4,40

Water ejector

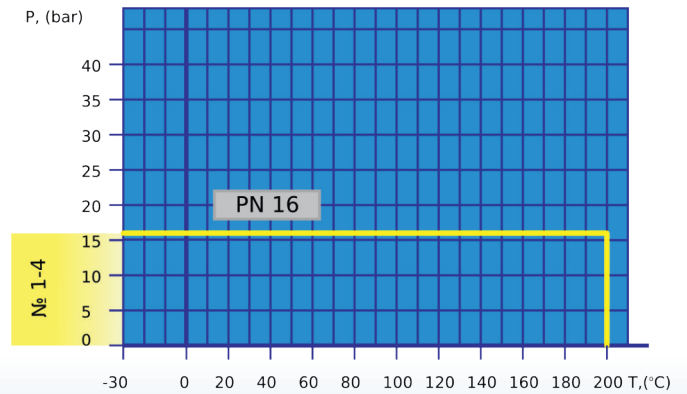
PN 16 № 1,2,3,4

16
PN



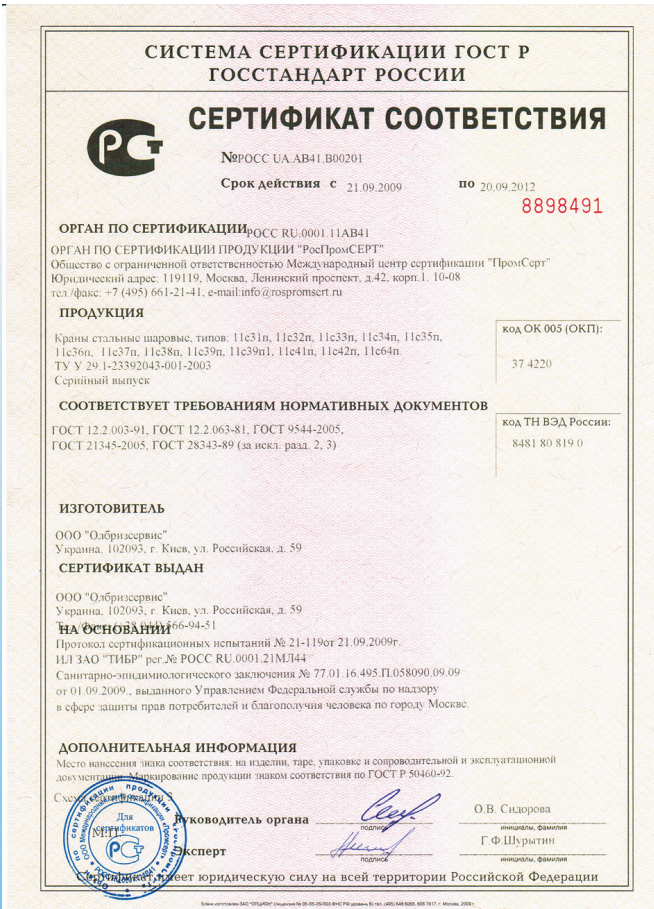
Material: P265GH 1.0425 EN 100217-2

Maximum allowable pressure at different temperatures



Type	PN	L	d	D	D1	D2	l1	l	Weight, kg
1	16	425	15	110	125	125	110	90	10,3
2	16	425	20	110	125	125	110	90	10,3
3	16	625	25	125	160	160	155	135	16,5
4	16	625	30	125	160	160	155	135	16,5

excellent balance between price & quality





excellent balance between price & quality



Trade representative

--



**59, Rosiyska str., 02093,
Kyiv, Ukraine**

e-mail:info@breeze.ua

http://www.breeze.ua

+38 044 566 94 51

+38 044 566 94 52

+38 044 566 94 53