



Private JSC "PIASTRELLA"

ПрАТ "ПІАСТРЕЛЛА"

01013, м. Київ, вул. Будіндустрії, 7, тел.: (044) 545-70-58, тел./факс: (044) 545-70-58;
р/р 26001020005606 в ф-лії „УніКредит Банк” ПАТ м. Києва, МФО 300744, ЄДРПОУ 33293530,
ІПН 332935326587, св-во № 200098222; e-mail: piastrella@piastrella.com.ua
Web: <http://www.piastrella.com.ua>

JSC PIASTRELLA PRODUCTS INFORMATION

Private JSC "Piastrrella" is a Ukrainian-Italian manufacturer of ceramic tiles, located in Kiev, Ukraine. JSC "Piastrrella" specializes in manufacturing of porcelain stoneware, floor tiles so-called gres (gres porcellanato, ital.) Our annual production capacity is approximately 2 500 000 m².

Our products are made on Italian equipment according to Italian technology and certified in many countries. The main products are kinds of gres tiles so-called "salt-pepper":

- **400 x 400 x 9 mm.**
- **300 x 300 x 7 mm;** also has available kinds: plain and structured, steps, as well as monochrome porcelain tiles (so-called "Monochrome" kind);
- **300 x 300 x 12 mm** (extremely durable);
- **200 x 200 x 12 mm** (extremely durable), also available with structured anti-slip surface;

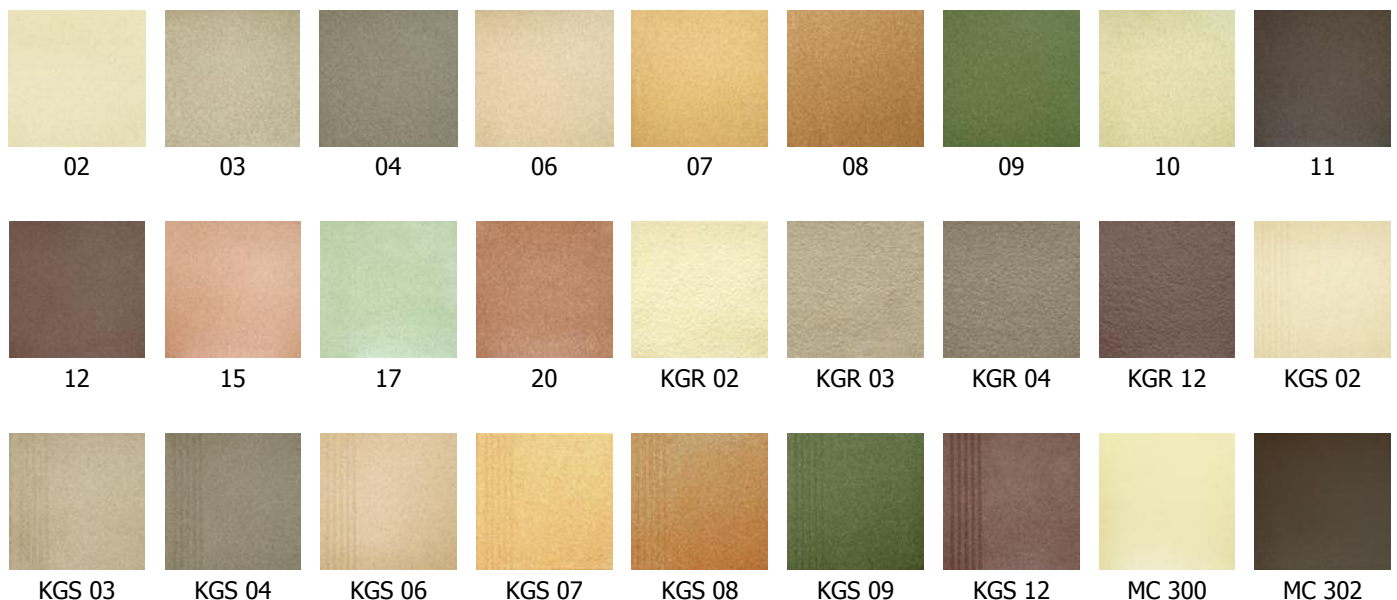
Draw your attention to the very durable gres tiles 12 mm thicknesses. It was designed specifically for areas with high loads on the floor surface.

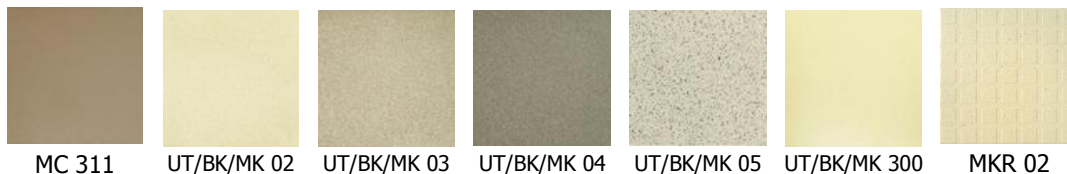
Increased thickness achieves new indicators of strength, which makes porcelain tile floors to be very durable. This is a promising material, which is great for flooring in industrial and commercial buildings, which require increased strength and durability. Also it is recommended for flooring on the entrance groups, manufacturing and warehouse facilities, which use lifting equipment, trucks and heavy machinery to move goods, supermarkets, shopping malls, airports, train stations, car dealerships, car repair, as well as places with high humidity - pools, car washes and under open sky - where required the frost resistance and the ability to thermal shock resistance.

Our benefits that we can offer you in comparing to other manufacturers of gres tiles:

- We have the largest **variety of tiles colors** from all the manufacturers represented in our market, **most of our colors are not producing by no one else;**
- We are not supergiant, but it allows us to be more flexible. Thus, **we can provide you with the lowest time from order to shipment of goods** (usually - within one week). The presence of significant stocks usually allows us to ship the same day;
- Moreover, at your request we **can produce tiles in an exclusive color;**
- If the client has serious ideas about tiles that he needed - color, texture surfaces, dimensions, etc., we **can design and set up production** of such tiles. If you have any ideas about a **new product range**, which would have sold well in our market, we can start manufacturing such products.

Colors of our products (numbers denote the color code) and surface structures:





Production is divided into the following groups:

1. 300 x 300 mm format:
 - a. KG – plain surface, digits mean color (KG 02 is beige, for example)
 - b. KGR - structural stoneware (with structural surface), digits mean color
 - c. KGS – steps, digits mean color
 - d. MC - monochrome stoneware, so-called Monocolor, digits mean color
 - e. UT - extremely durable gres tiles of 12 mm thickness (plain surface), digits mean color
2. 200 x 200 x 12 mm format:
 - a. MK - extremely durable gres tiles with plain structure, digits mean color
 - b. MKR - structured ant-slip surface, digits mean color (MKR 02 is beige, for example)
3. 400 x 400 x 9 mm format:
 - a. BK - plain surface, digits mean color (BK 02 is beige, for example).

Explanation of Product encoding:

1. Lettering "KG" - is 300 x 300 x 7 mm gres tiles, the following letters: **KGS** - steps, **KGR** - with a structural surface; lettering **"UT"** - extremely durable gres 300 x 300 x 12 mm thickness; **"MK"** - extremely durable gres 200 x 200 x 12 mm thickness; **"MC"** - monochrome gres 300 x 300 x 7 mm, so-called "Monocolor"; **"BK"** – gres 400 x 400 x 9 mm format.

2. The two following digits mean the color code: 02 – beige, 03 - light-gray, 04 - gray, 06 - beige-brown, 07 - light mustard, 08 - dark mustard, 09 - green, 10 - beige-green, 11 – black, 12 – dark-brown, 15 – pink, 17 - light green, 20 - bordeaux-gray.

3. Letter (letters) after the color code – is a tone code. This label is technological in nature and does not affect the cost of production.

4. Figure by a fraction - is a caliber of products. This label is technological in nature and does not affect the cost of production.

For example:

- Designation of "Ceramic tile KG 02 N/5" is interpreted as follows: Ceramic tile - stoneware, beige color, Tone N, Caliber 5.

- Designation of "Ceramic tile KG 02 VJ/5" is interpreted as follows: Ceramic tile - stoneware, beige color, Tone VJ, Caliber 5.

«N» and «VJ» have some differences in color saturation.

Characteristics of product packaging:

Package	Characteristics of 300 x 300 mm formats	Tile's thickness	
		7 mm	12 mm
Box 320x320x150 mm	Number of tiles in box, pcs.	19	11
	Number of m ² in box	1,71	1,0
	Box weight, kg	26 + 1	26 ± 1
Pallet 1200x800x800 mm	Number of boxes on pallet, pcs.	40	40
	Number of tiles on pallet, pcs.	760	440
	Number of m ² on pallet	68,4	40
	Pallet weight, kg	1045	1045
Package	Characteristics of 400 x 400 mm formats	Tile's thickness 9 mm	
Box 405x405x100 mm	Number of tiles in box, pcs.	10	
	Number of m ² in box	1,6	
	Box weight, kg	30 ± 1	
Pallet 1200x800x980 mm	Number of boxes on pallet, pcs.	48	
	Number of tiles on pallet, pcs.	480	
	Number of m ² on pallet	76,8	
	Pallet weight, kg	1475	

Pallet 1200x800x970 mm	Characteristics of 200 x 200 x 12 mm formats	Tile's thickness 12 mm
	Number of tiles in box, pcs.	21
	Number of m2 in box	0,84
	Box weight, kg	22,3 + 1
	Number of boxes on pallet, pcs.	60
	Number of tiles on pallet, pcs.	1260
	Number of m2 on pallet	50,4
	Pallet weight, kg	1358

Table of typical sizes:

	Calibers		Coordinating dimensions, mm	Nominal dimensions, mm	Tile's thickness, mm
	Index	Dimensions, mm			
300*300 mm	1	299,6 – 300,5	302x302	300x300	7 (12)
	2	300,6 – 301,5			
	3	301,6 – 302,5	305x305	303x303	7 (12)
	4	302,6 – 303,5			
	5	303,6 – 304,5	308x308	306x306	7 (12)
	6	304,6 – 305,5			
	7	305,6 – 306,5			
	8	306,6 – 307,5			
400*400 mm	1	398,6 – 399,5	402x402	400x400	9
	2	399,6 – 400,5			
	3	400,6 – 401,5			
	4	401,6 – 402,5	405x405	403x403	9
	5	402,6 – 403,5			
	6	403,6 – 404,5			
200*200 mm	1	198,6 – 199,5	202x202	200x200	12
	2	199,6 – 200,5			
	3	200,6 – 201,5			
	4	201,6 – 202,5	205x205	203x203	12
	5	202,6 – 203,5			
	6	203,6 – 204,5			

Comparison table of physical-mechanical properties of tiles 7 and 12 mm thickness

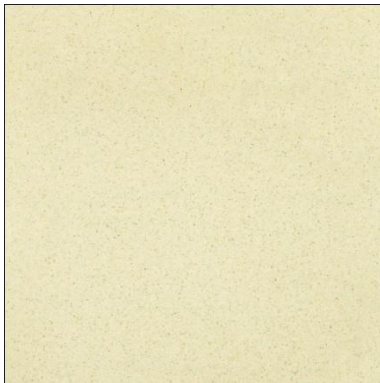
№	Physical-mechanical characteristics	According to valid National Standard (ДСТУ Б В.2.7-117-2002)	Mean values for tiles 300x300x7 mm	Mean values for tiles 200x200x12 mm 300x300x12 mm
1.	Water absorption, % no more than	3,5	0,01-0,5	0,01-0,2
2.	Abrasion resistance, g/sm ² , no more than	0,18	0,1	0,1
3.	Modulus of rupture, MPa, not less than	28	35-40	45-55
4.	Frost resistance, (Temperatures up to -20° C), number of cycles, not less than	25	50 Resistant	70 Resistant
5.	Thermal shock resistance	Not determined	Resistant	Resistant
6.	Wear-resistance group	Not determined	P.E.IV	P.E.IV
7.	Slip resistance	Not determined	R12	R12

**Product characteristics (properties) according to the standard MSZ EN 14411:2007
"Ceramic tiles – definitions, classification, characteristics and marking"**

Physical and chemical properties	Requirements and declared values	Test/assessment method
Water absorption, %	$E \leq 0,5$	MSZ EN ISO 10545-3:1999
Breaking strength, thickness $\geq 7,5$ mm, N	Not less than 1300	MSZ EN ISO 10545-4:1999
Modulus of rupture, thickness $\geq 7,5$ mm, N/mm ²	Not less than 35	
Impact resistance	0,83*	MSZ EN ISO 10545-5:1999
Abrasion resistance, mm ³	Maximum 175	MSZ EN ISO 10545-6:1999
Coefficient of linear thermal expansion (from ambient temperature to 100° C), 1/K	$3,90 \cdot 10^{-6}$ *	MSZ EN ISO 10545-8:1999
Thermal shock resistance	Resistant*	MSZ EN ISO 10545-9:1999
Frost resistance	Resistant*	MSZ EN ISO 10545-12:1999
Resistance to low concentrations of acid and alkalis	ULA*	MSZ EN ISO 10545-13:1999
Resistance to household chemicals and swimming pool salts	Minimum UB	

*Informative value

TYPICAL COLORS & SURFACE STRUCTURES



02 - beige



03 - light grey



04 - grey



06 - beige-brown



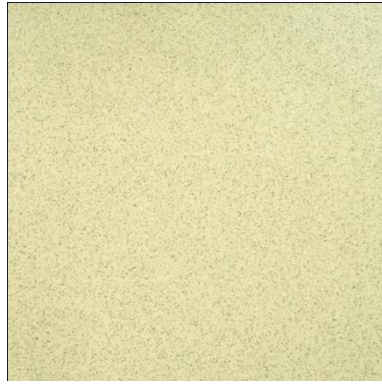
07 - light mustard



08 - dark mustard



09 - green



10 – beige-green



11 - black



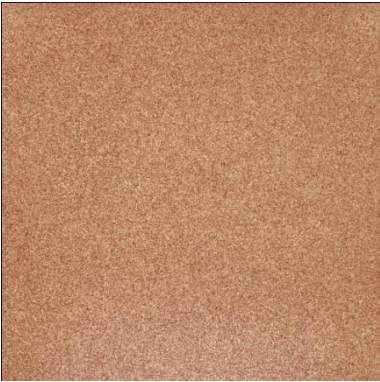
12 – dark brown



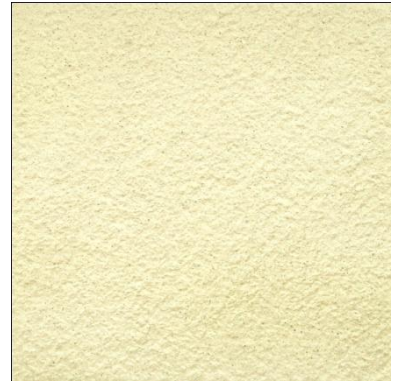
15 - pink



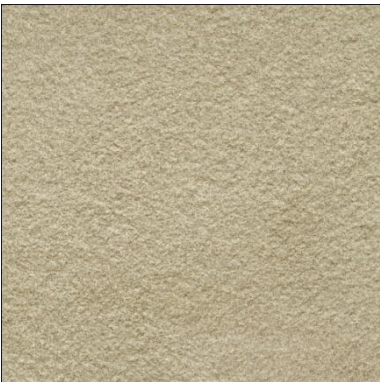
17 – light-green



20 – bordeaux-grey



KGR 02



KGR 03



KGR 04



KGR 12



KGS 02



KGS 03



KGS 04



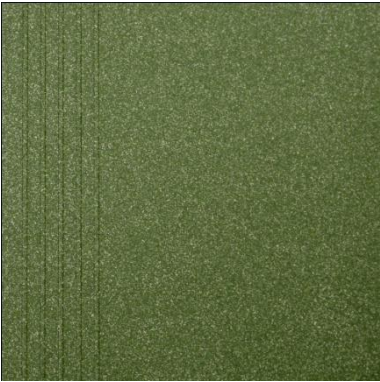
KGS 06



KGS 07



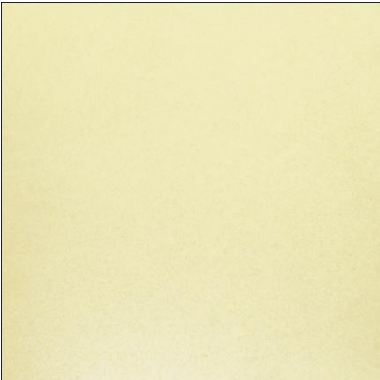
KGS 08



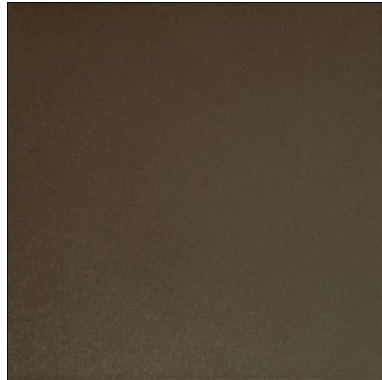
KGS 09



KGS 12



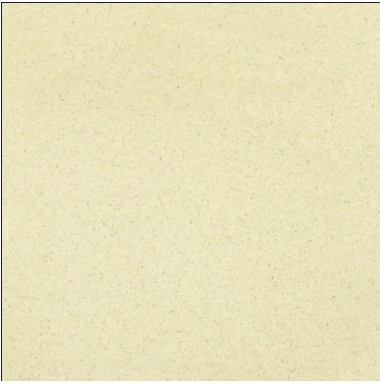
MC 300



MC 302



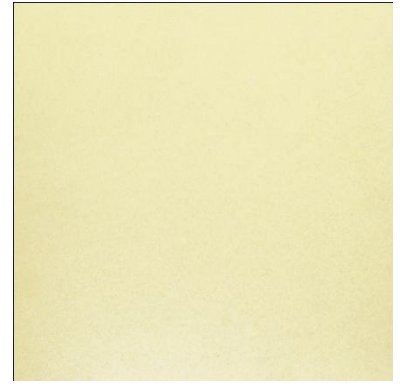
MC 311



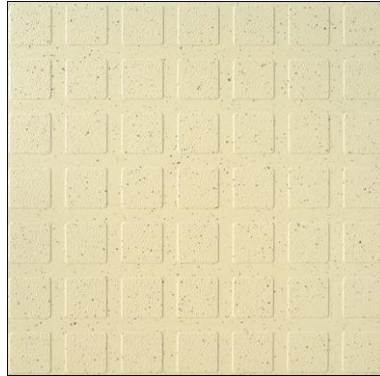
UT/BK/MK 02



UT/BK/MK 03



UT/BK/MK 300



MKR 02

Structured anti-slip surface