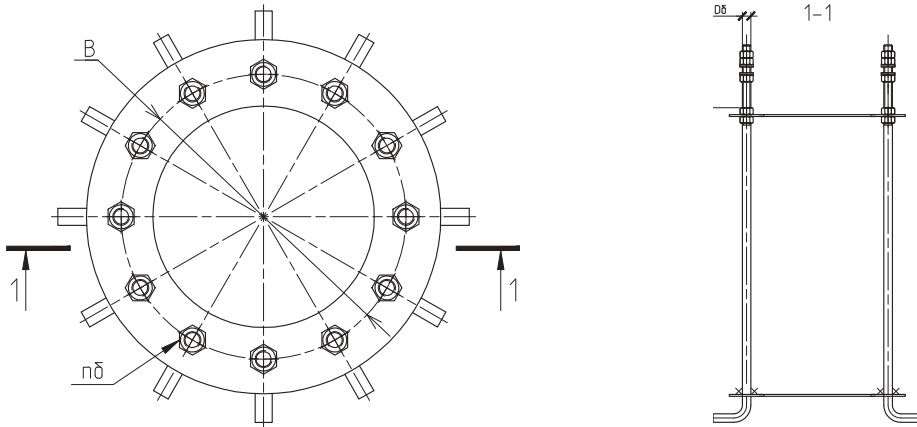




Embedded metal footing for light poles of PS and PK type



Type of footing	Dimensions				Weight kgs
	H mm	B mm	Ø mm	holes pcs	
FZPS310	1050	310	30	6	63
FZPS370	850	370	24	12	68
FZPS460	1000	460	27	12	96
FZPS530	1050	530	30	12	123
FZPS590	1300	590	36	12	206
FZPK450	1000	450	27	12	96
FZPK500	1050	500	30	12	123
FZPK560	1300	560	36	12	205
FZPK610	1300	610	36	12	206
FZPK660	1300	660	36	12	208
FZPK730	1300	730	36	12	210

Selection of parts depending on PS or PK poles' type

PS	Type of foundation
PS8-0,25	FZPS310
PS9-0,25	
PS10-0,25	
PS11-0,25	
PS12-0,25	
PS8-0,4	FZPS370
PS9-0,4	
PS10-0,4	
PS11-0,4	
PS12-0,4	
PS8-0,7	FZPS460
PS9-0,7	
PS10-0,7	
PS11-0,7	
PS12-0,7	
PS8-1,0	FZPS530
PS9-1,0	
PS10-1,0	
PS11-1,0	
PS12-1,0	
PS8-1,0	FZPS590
PS9-1,0	
PS10-1,0	
PS11-1,0	
PS12-1,0	

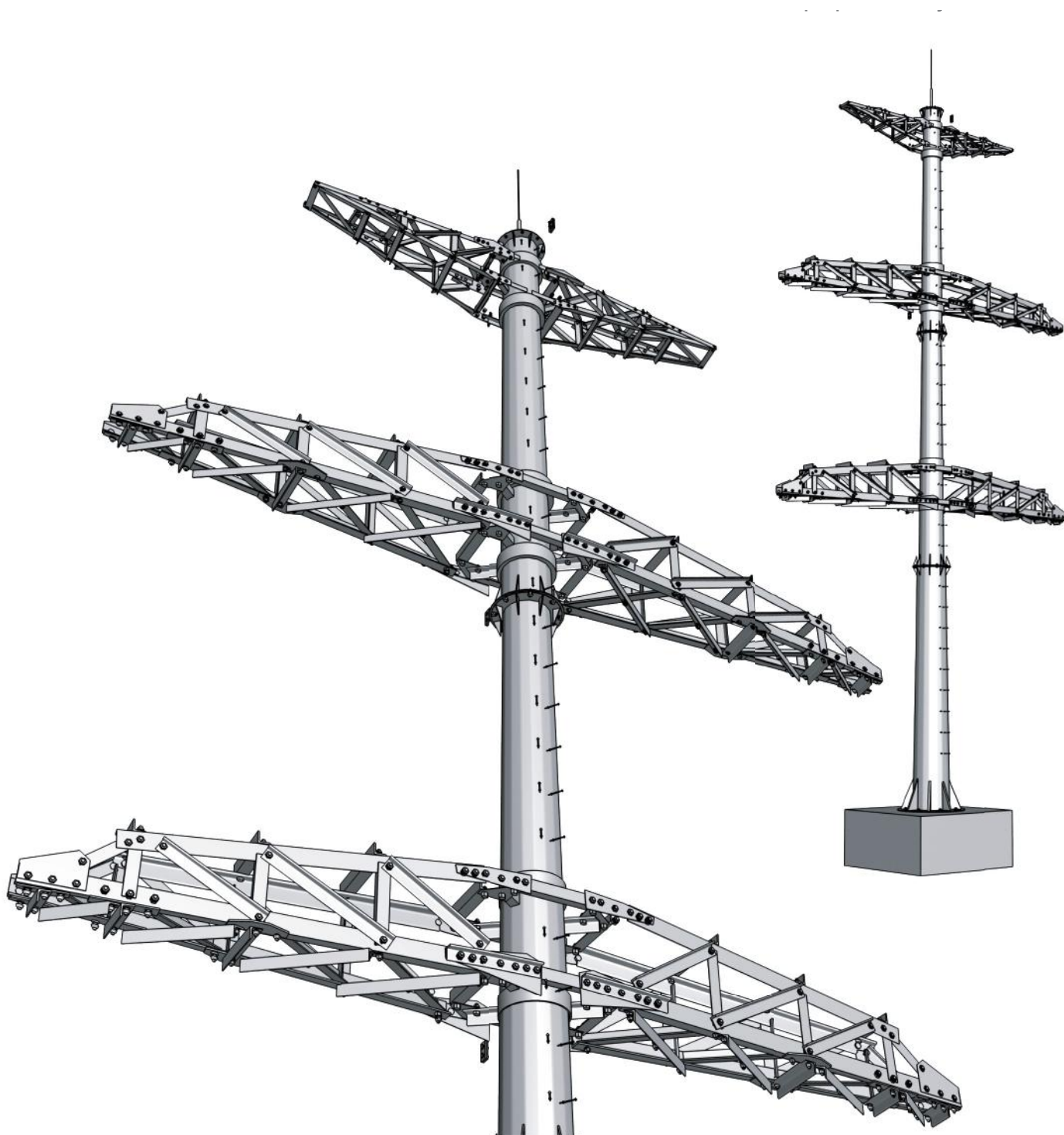
PK	Type of foundation
PK9-0,7	FZPK450
PK9-1,0	
PK10-0,7	
PK9-1,3	FZPK500
PK9-1,5	
PK10-10	
PK11-0,7	FZPK560
PK12 -0,7	
PK9-2,0	
PK10-1,3	
PK10-1,5	
PK11-1,0	FZPK610
PK12-1,0	
PK9-2,5	
PK10-2,0	
PK11-1,3	
PK11-1,5	FZPK660
PK12-1,3	
PK12-1,5	
PK10-2,5	FZPK730
PK11-2,0	
PK11-2,5	
PK12-2,0	
PK12-2,5	



Polygonal rack based steel poles

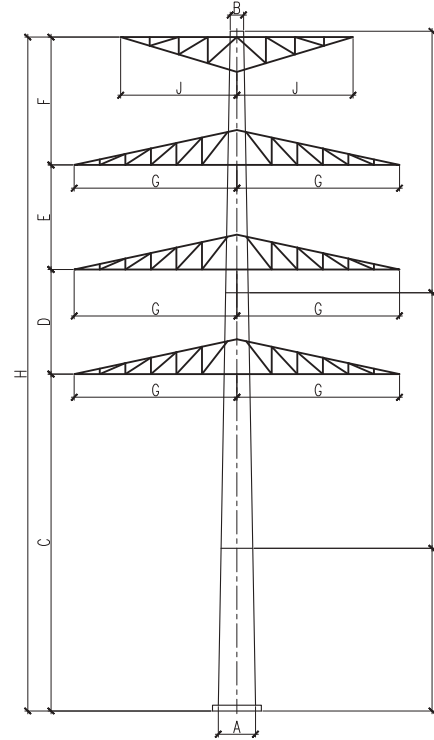
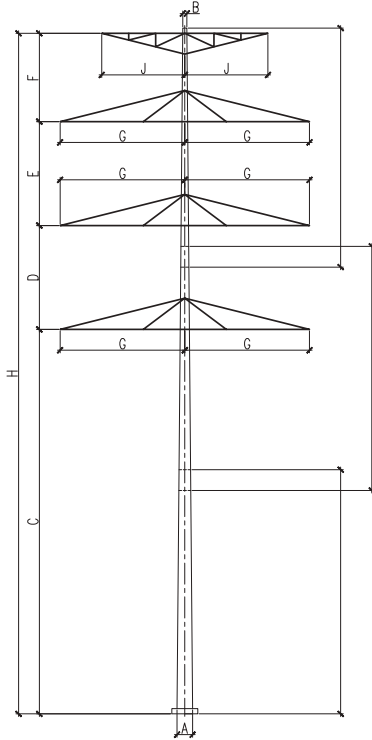
PTL poles made of polygonal bent rack are universal, i. e. they can be modified according to specs. One of the main advantages is mounting speed. They can be installed two or four times faster in comparison to traditional ones. They are also durable, maintainable and vandal resistant. This type adaptability gives unique abilities for installing and mounting in complex conditions.

Standard sizes are: 4 – 42 meters.

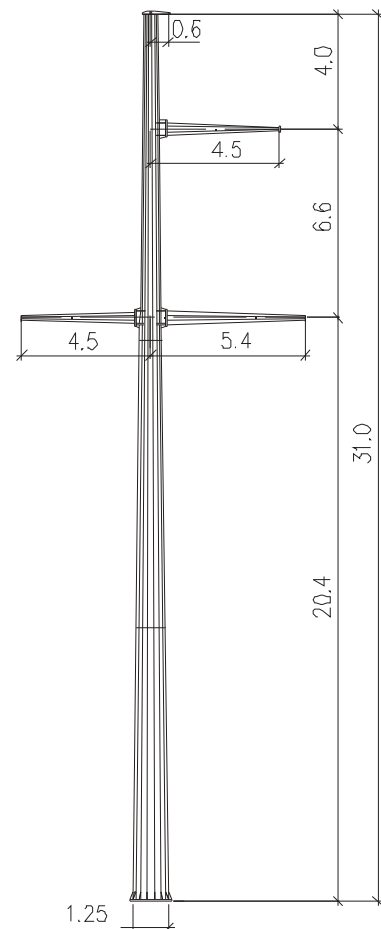
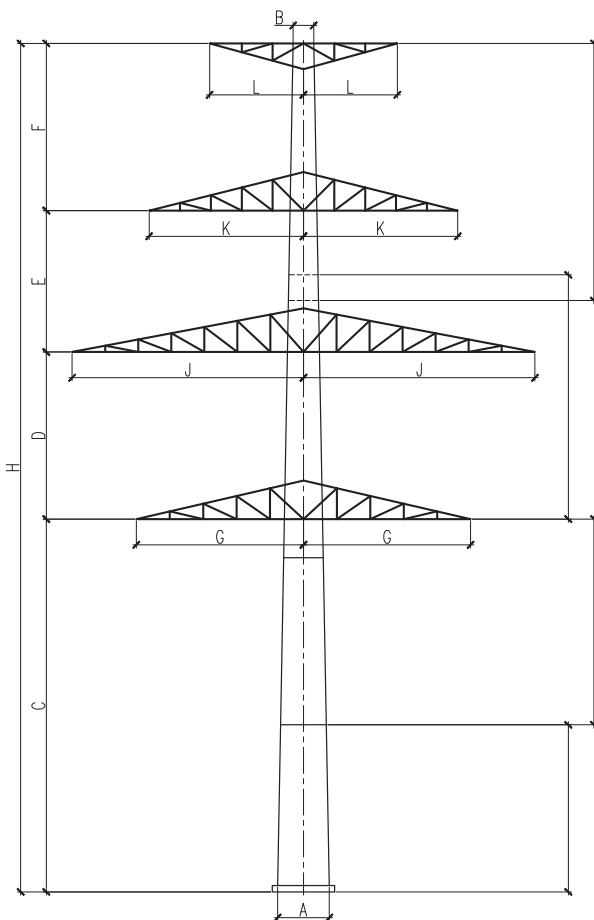




Polygonal poles for 110 kW voltage line
Example:

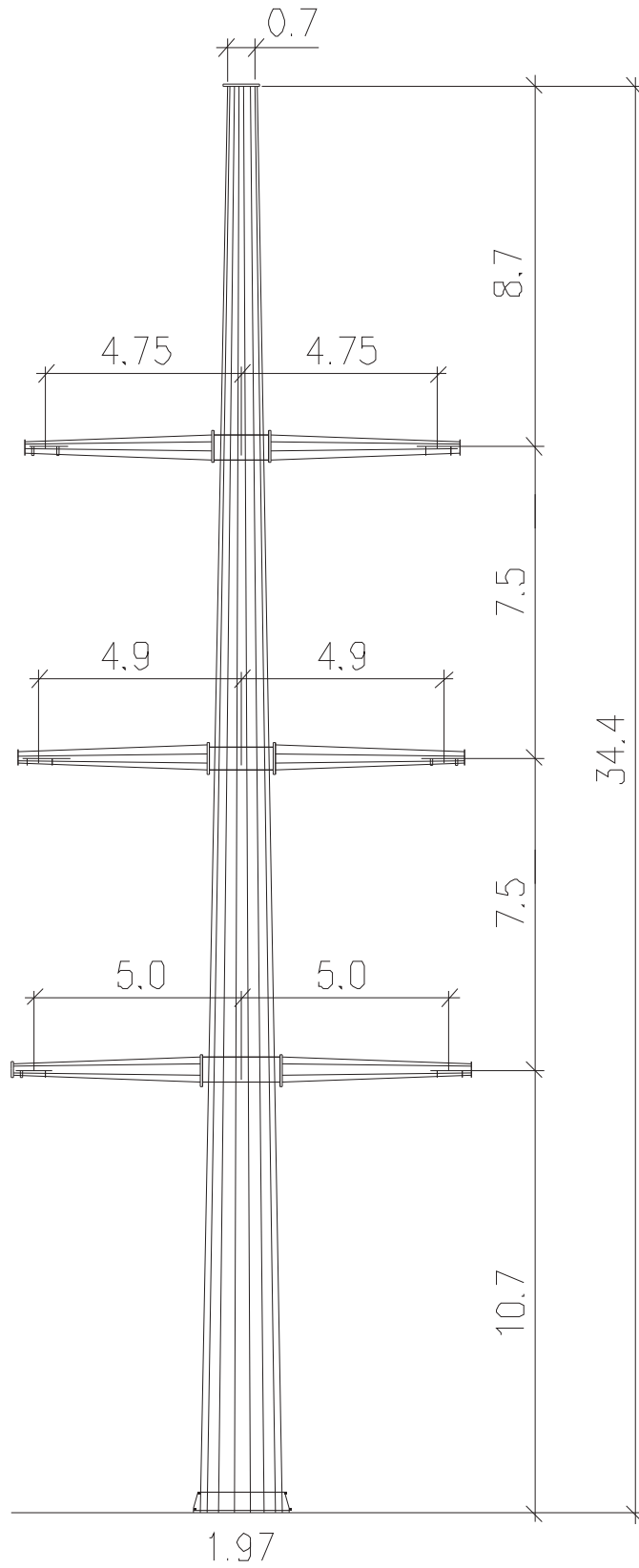


Polygonal poles for 220 kW voltage line
Example:





Polygonal poles for 330 kW voltage line
 Example:



MP330-1
MP330-2
MP330-1
MP330-3
MP330-5
MP330-2
MP330-4
MP330-6

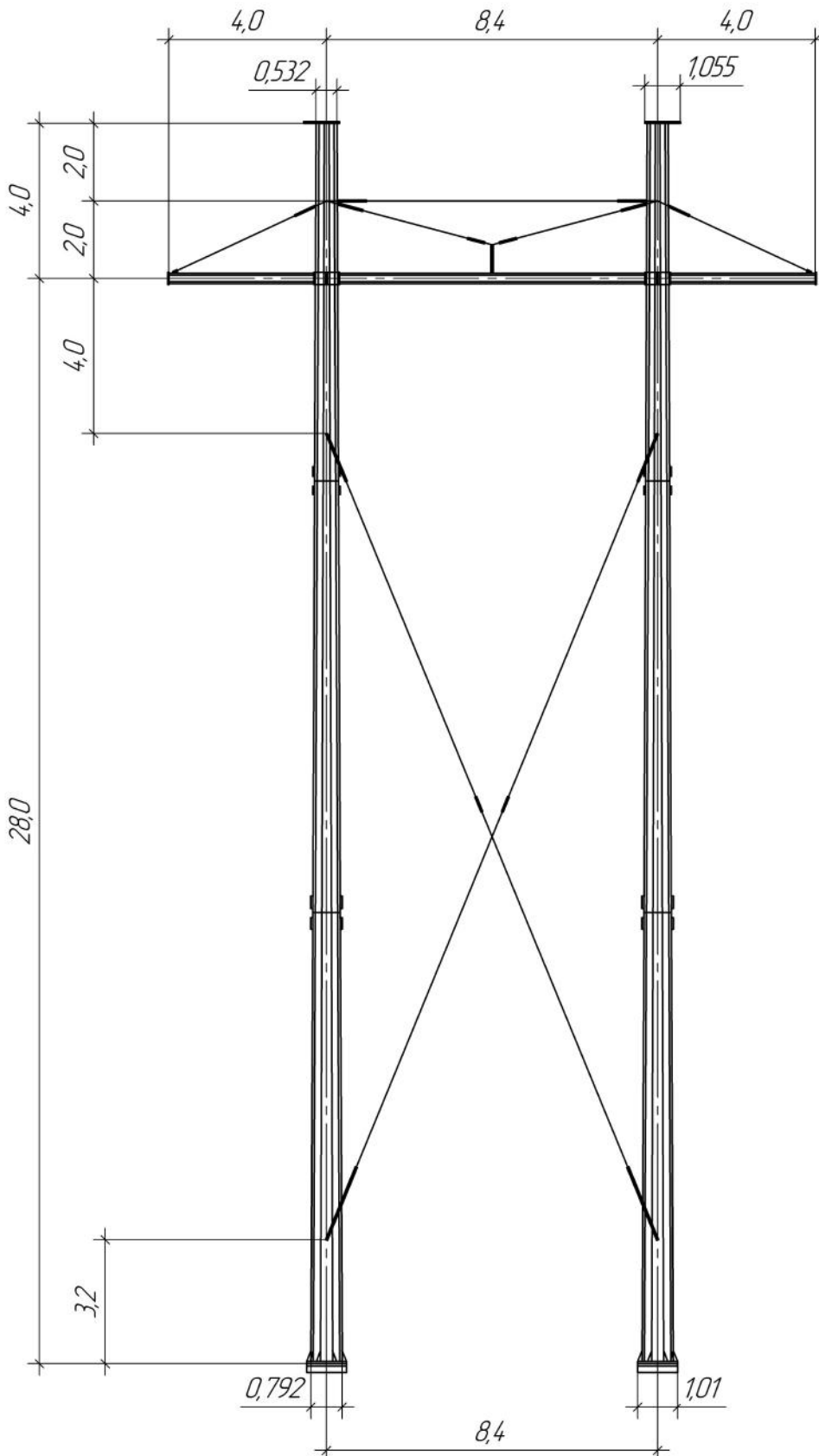


Polygonal poles for 330 kW voltage line
(Intermediate and Corner)

Example:

PMG330-28

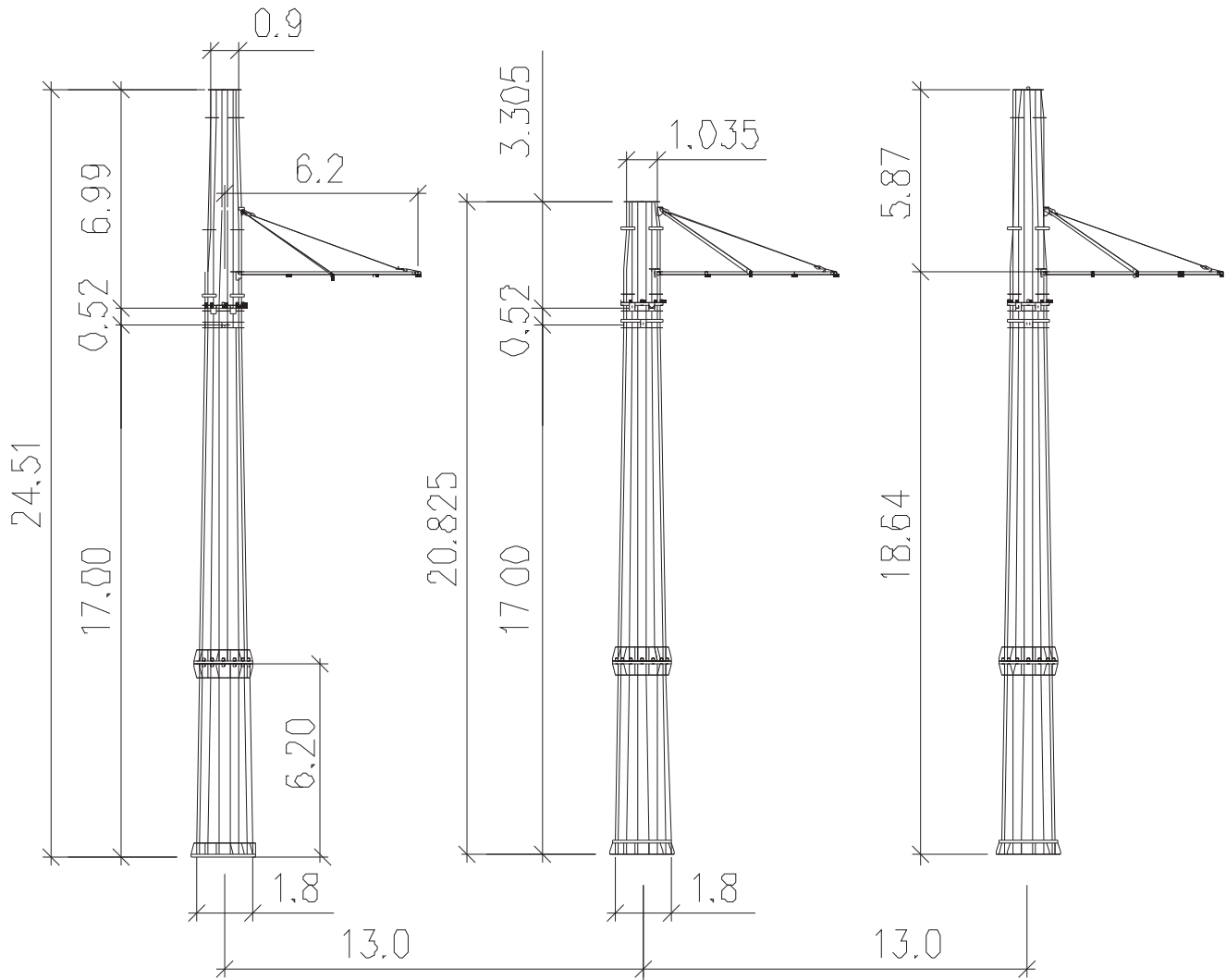
PMG330-25





Polygonal poles for 500 kW voltage line
Example:

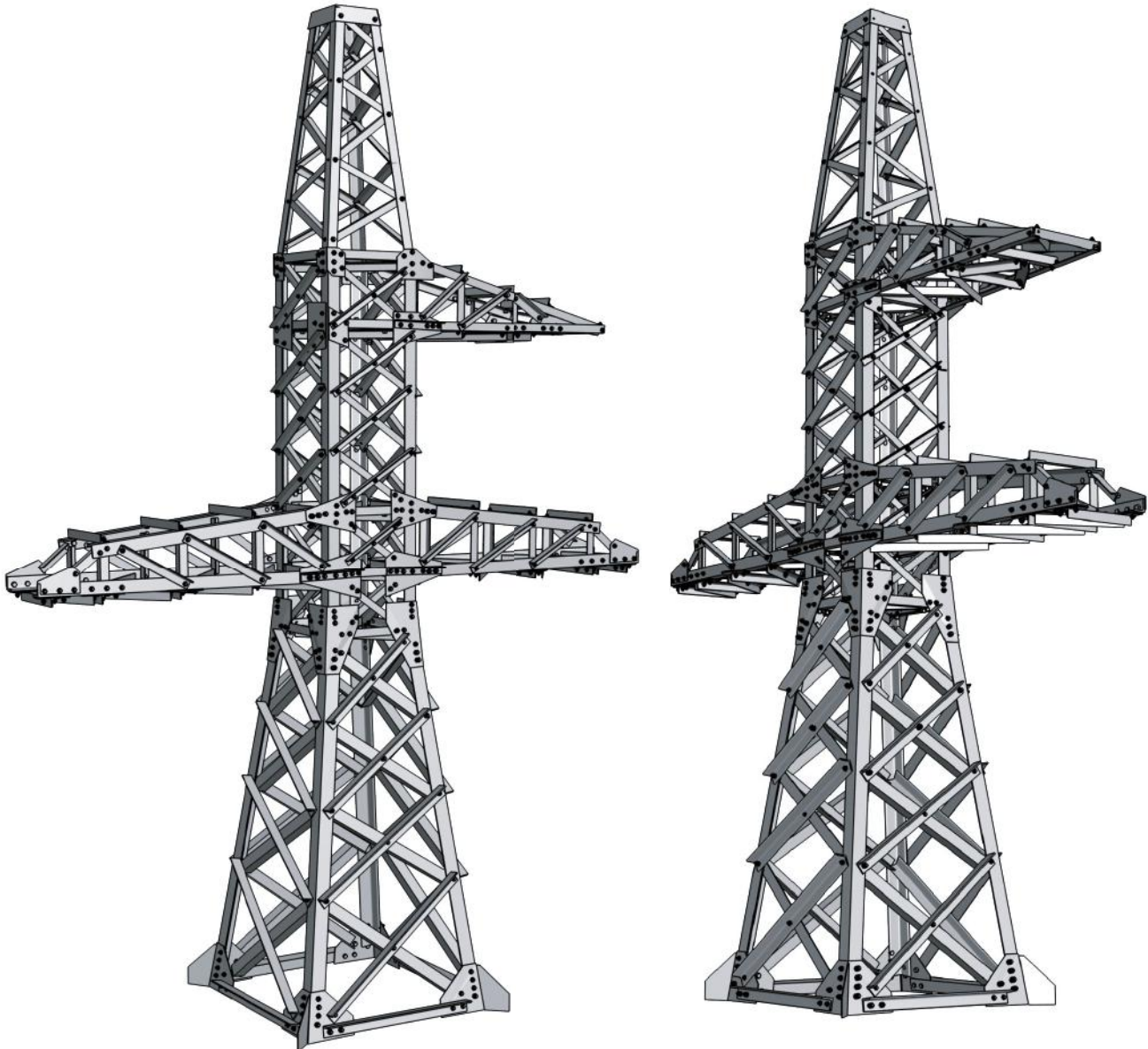
2MP500-1B
2MP500-3B
3MP500-1
3MP500-1+5





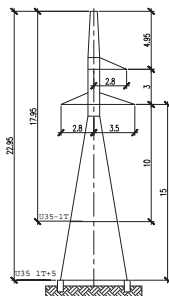
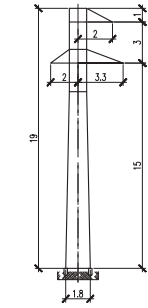
Unified steel lattice poles VL 35Kw–750kW

- this type of poles is bolts-on, without welding assemblies;
- constructive features and technological processes used in manufacturing provide high quality and durability;
- the reduction of standard sizes reduces prices and facilitates transportation, storage and mounting in site area.





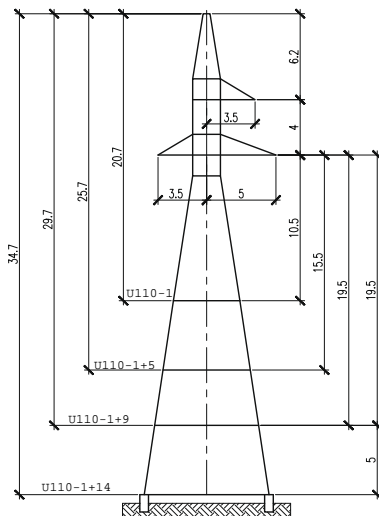
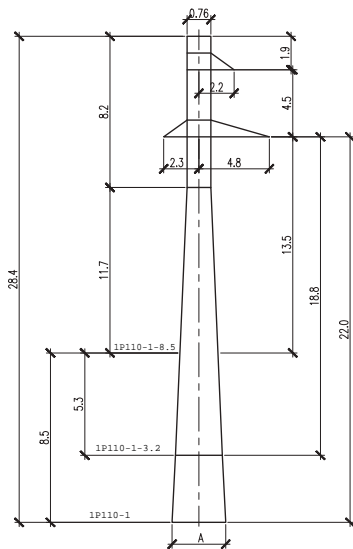
Bolting anchor–corner poles, 35Kw



Type	Weight not galvanized, kg	Weight galvanized, kg
P35-1	1499	1561
P35-1T	1603	1669
P35-2	1861	1938
P35-2T	1965	2046
1P35-2	2007	2090
1P35-2T	2114	2201

U35-1	2964	3087
U35-2	4831	5030
U35-1T	3140	3270
U35-2T	5004	5210
U35-3	1635	1703
U35-4	2799	2915
1U35-2	3492	3636
1U35-2T	3650	3800
1U35-2T*	3724	3877

Bolting anchor–corner and branch poles, 110Kw



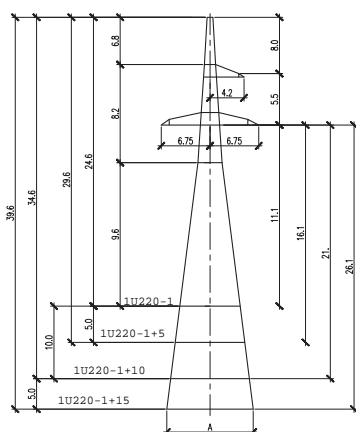
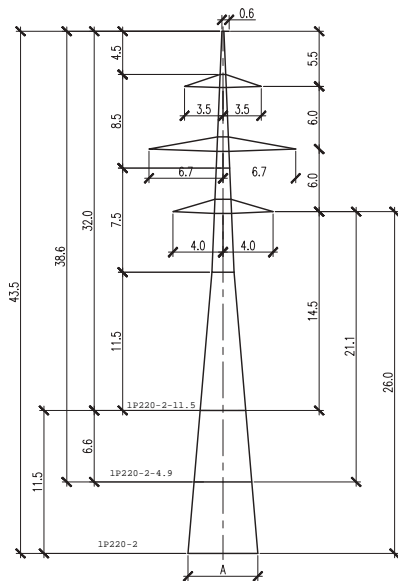
Type	Weight not galvanized, kg	Weight galvanized, kg
P110-1	1895	1937
P110-2	2691	2802
P110-3	2458	2560
P110-4	3240	3374
P110-5	2585	2692
P110-5PG	2722	2835
P110-6	3794	3951
P110-6PG	3894	4055
PS110-6	3334	3427
PS110-9	2847	2965
PS110-9PG	2979	3102
PS110-10	4715	4910
PS110-10PG	4814	5013
1P110-1	2211	2302
1P110-2	3318	3455
1P110-3	2033	2117
2P110-1	2557	2302
2P110-3	2302	2397

U110-1	5040	5248
U110-2	7704	8022
U110-2B	7863	8187
U110-2P	7849	8173
U110-3 *	3377	3517
U110-4 *	5394	5617
US110-3	5299	5518
US110-5	6741	7019
US110-6	10447	10878
US110-7	7440	7747
US110-8	12081	12579
1U110-1 *	3021	3145
1U110-2 *	4238	4413
1U110-3 *	3854	4013
1U110-4 *	5844	6085
1U110-4P	5670	5904
1U110-48	5685	5919

*- lightning conductor



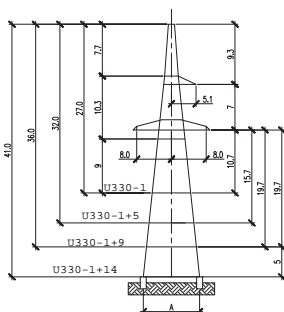
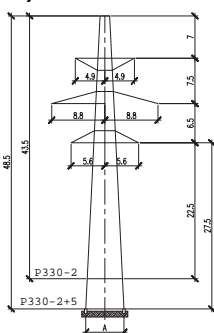
Bolting anchor-corner and branch poles, 220kW



Type	Weight not galvanized, kg	Weight galvanized, kg
P220-2	6208	6464
P220-2T	6327	6588
P220-3	4698	4892
P220-3T	4876	5077
1P220-2	5423	5647
1P220-2T	5570	5799
2P220-1	4396	4577
2P220-1T	4595	4784
2P220-2	6728	7005
2P220-2T	6876	5905
2P220-3	3909	4070
2P220-3T	4107	4276
PS220-2	5503	5730
PS220-2T	5624	5856
PS220-5	5575	5805
PS220-5T	5741	5978
PS220-6	8461	8810
PS220-6T	8546	8898

U220-1	8609	8964
U220-2	14398	14992
U220-2T	14932	15548
U220-3	7247	7546
1U220-1	6895	7179
1U220-1T	7526	7836
1U220-2	10590	11026
1U220-2T	11187	11648
1U220-3	8534	8886
1U220-3T	9168	9564
1U220-4	13226	13771
1U220-4T	13848	14419

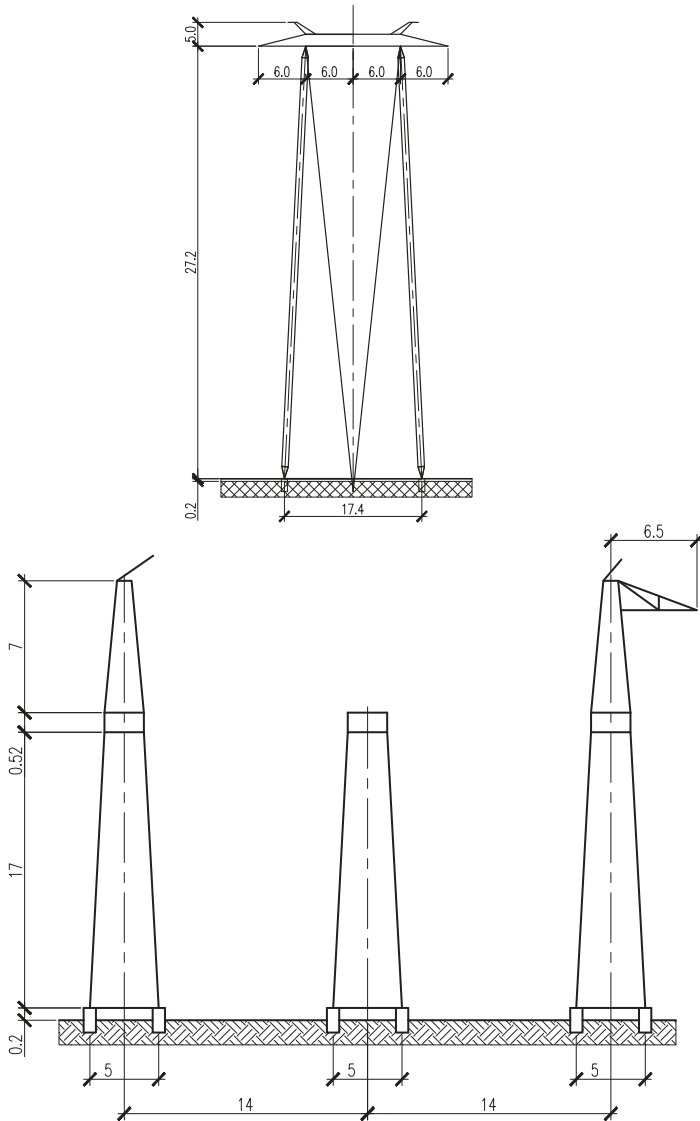
Bolting anchor-corner poles, 330kW



Type	Weight not galvanized, kg	Weight galvanized, kg
P330-3	6152	6406
P330-3T	6560	6831
PS330-2	9067	9441
PS330-2T	9297	9680
PS330-3	5416	5640
PS330-3T	5825	6065
1 P330-1	5208	5423
1 P330-1T	4107	4276
2 P330-1	6522	6750
2 P330-1T	6796	7076
U330-1	13145	13687
U330-2	22972	23919
U330-2T	23873	24857
U330-3	10502	10935
1 U330-1	13843	14413
1 U330-1T	14496	15093



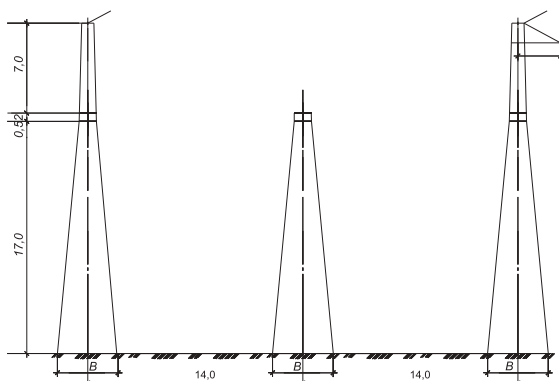
Bolting anchor-corner and branch poles, 500kW



Type	Weight not galvanized, kg	Weight galvanized, kg
PB-1	6543.1	6812.7
PB-1.1	6460.2	6726.4
PB-2	6711.4	6987.9
PB-2.1	6648.7	6922.6
PB-3	7323.3	7625.5
PB-3.1	7249.6	7548.3
PB-4	7765.6	8085.6
PB-4.1	7690.4	8007.2
PB-5	8175.4	5812.2
PB-5.1	8100.2	8433.9
PUB-2	9442.5	9831.5
PUB-5	9308.0	9691.5

U-1	14405.3	14998.8
U-1T	15982.7	16641.2
U-2	15451.4	16088.0
U-2T	17028.8	17730.3
U-2A	12941.6	13474.8
UBM-17	12844.8	13374.0
UBM-22	15184.2	15809.8
R-1	10810.9	11256.3
R-2	11473.0	11945.7

Bolting anchor-corner poles, 750kW

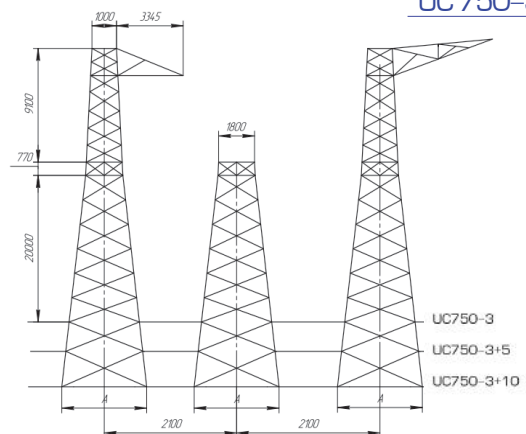


Example:

- U1
- U2
- U2K

Example:

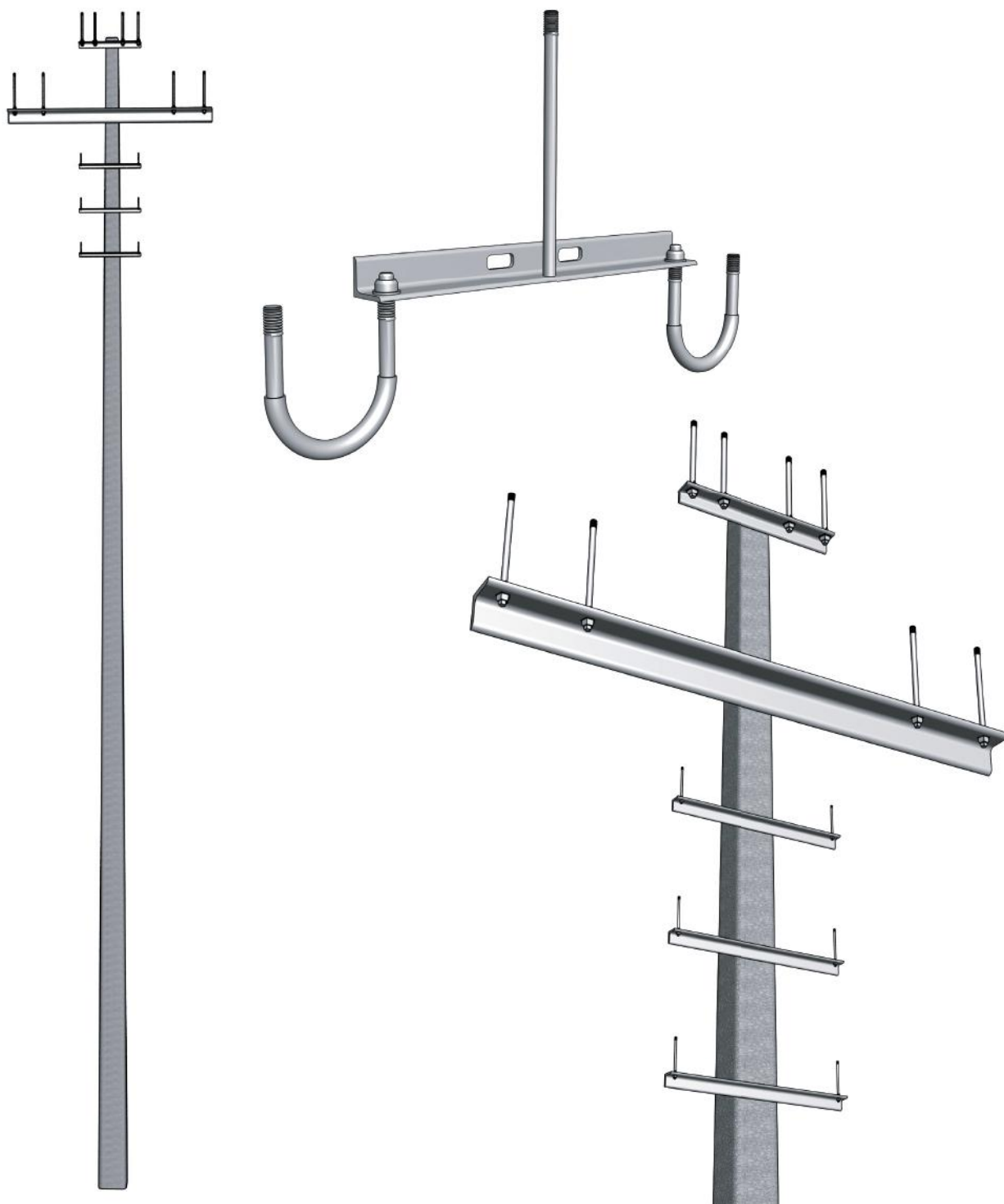
UC 750-3

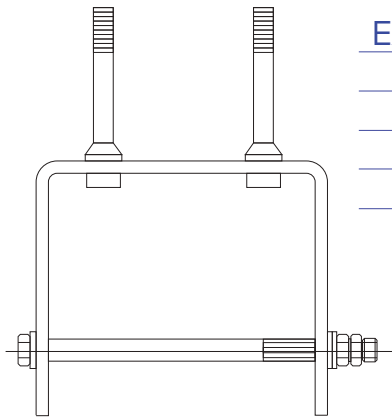




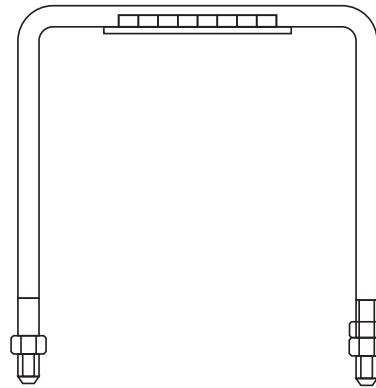
Metal constructions 0.38kW, 6Kw–10kW

To be installed on reinforced–concrete vibratory racks. In spite of lightness are used widely and include traverses, brackets, clamps, caps, extensions etc. The plant has its own researches in this sector which are used successfully.



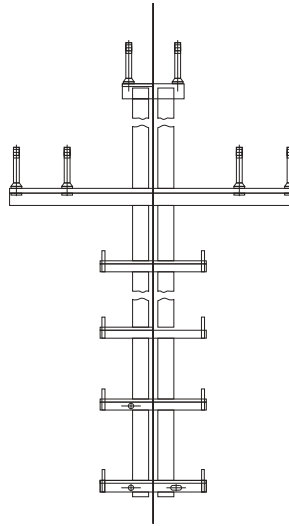
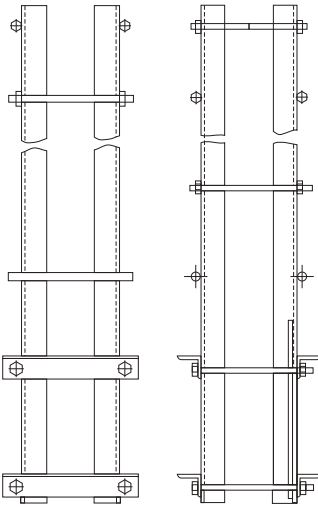


Example:
Head
OG1
OG3
OG6



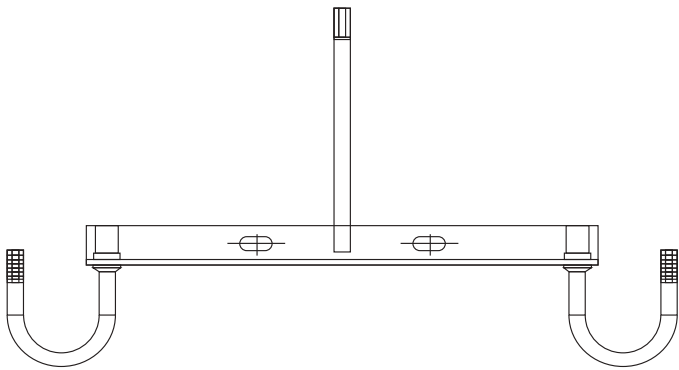
Example:
Clamp
X1
X35
X42

Example:
Clamp
X10
X12
X13

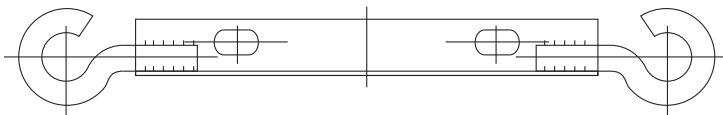


Example:
Stand
TS1
TS2
TS3

Metal constructions 0.38kW

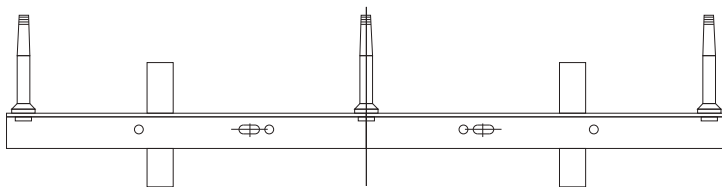


Example:
Traverse
TN-1
TN-2
TN-3
TN-4



Example:
Traverse
TN-18
TN-19
TN-27

Metal constructions 6Kw–10Kw



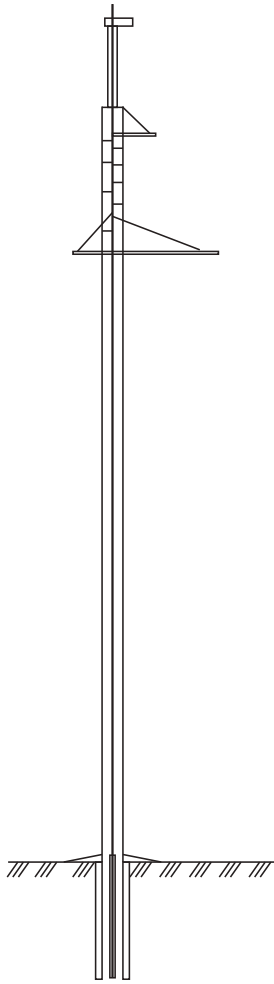
Example:
Traverse
TM-1
TM-2
TM-3



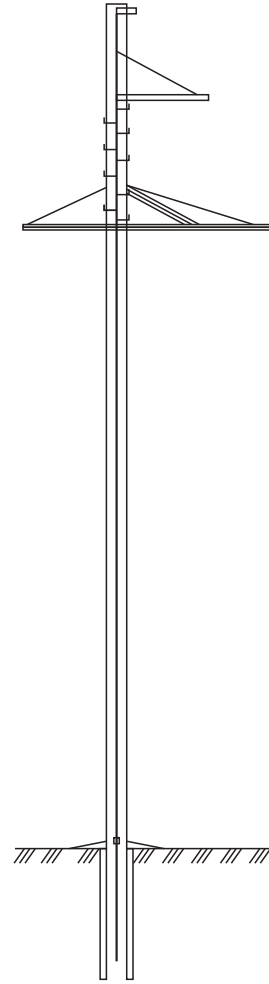
Metal constructions 35kW–500kW

To be installed on centrifugation conical and painted reinforced–concrete racks and supports: intermediate, bolting anchor–corner, end, single– and double chained. Currently PJSC Avdiyivsky Metal Contractions Plant adopts this type of constructions to use in polygonal and conical poles.

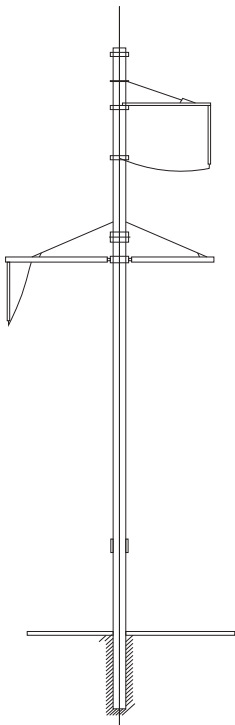




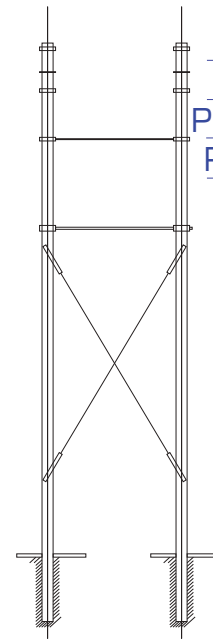
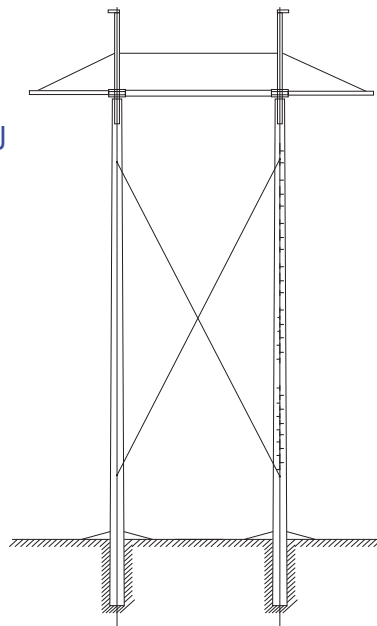
Example:
Pole
PB-35-1.1
PB-35-2.1
UB-35-1
UB-35-2



Example:
Pole
PB-110-1
PB-110-2
UB-110-1
UB-110-2



Example:
Pole
PB-220-1
UB-220-1UU



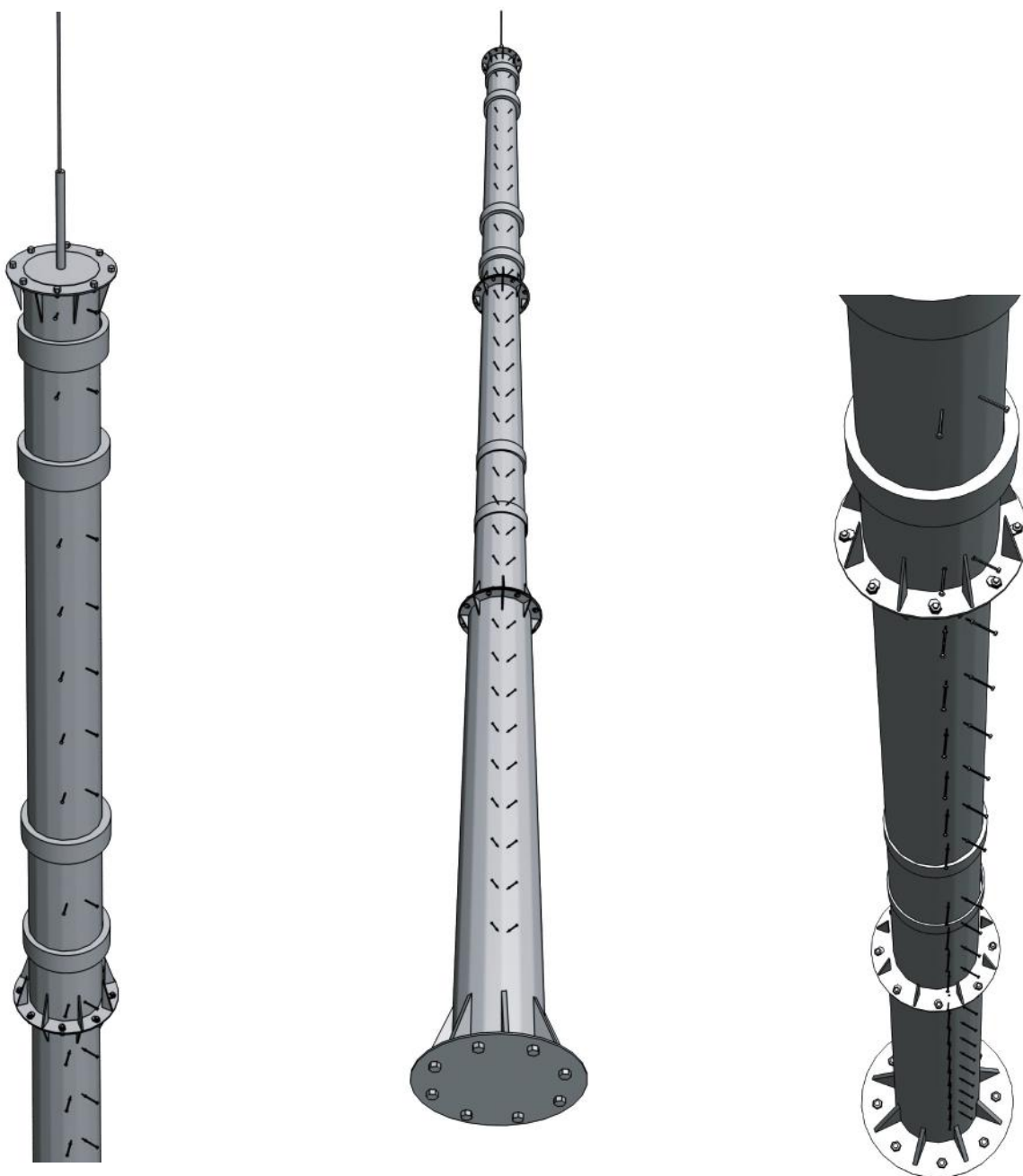
Example:
Pole
PB-330-7N
PB-330-3

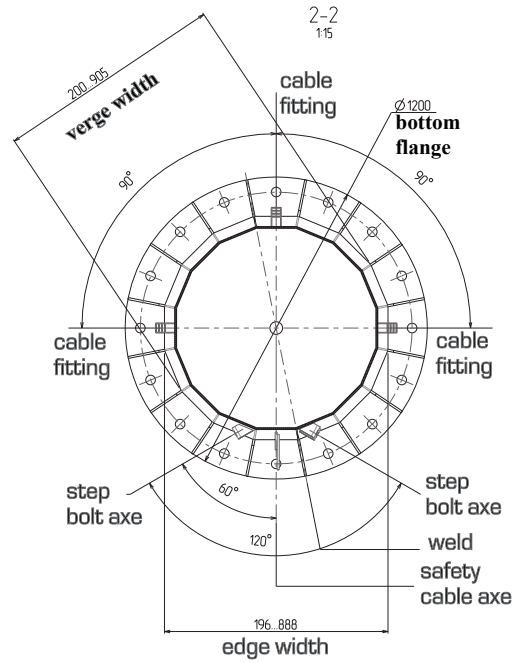
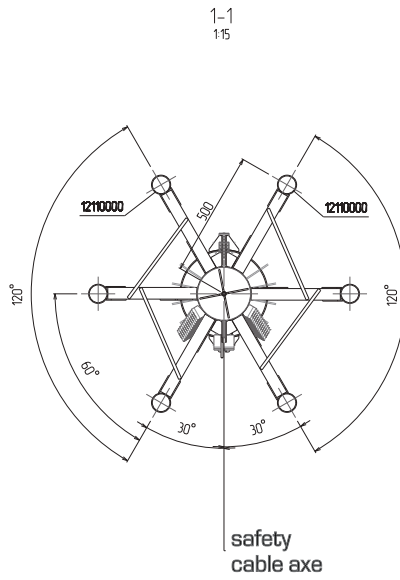
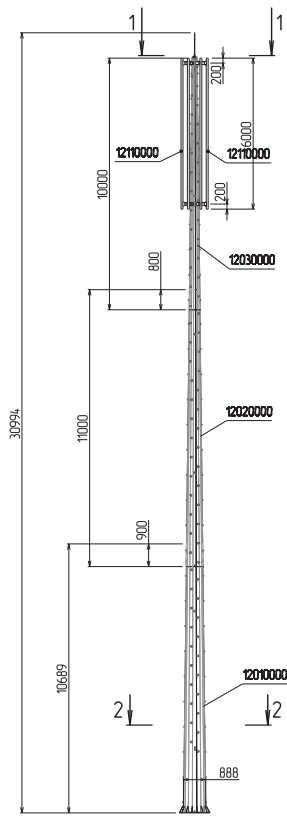


Radiorelay communication steel masts and towers

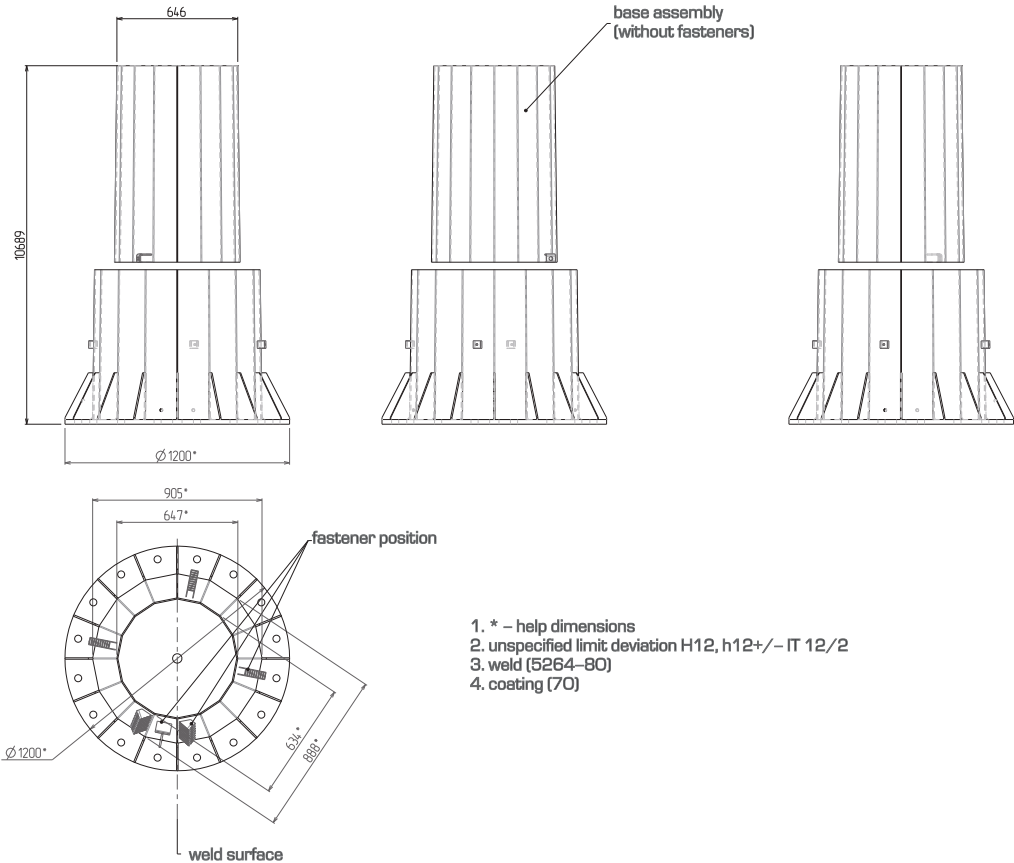
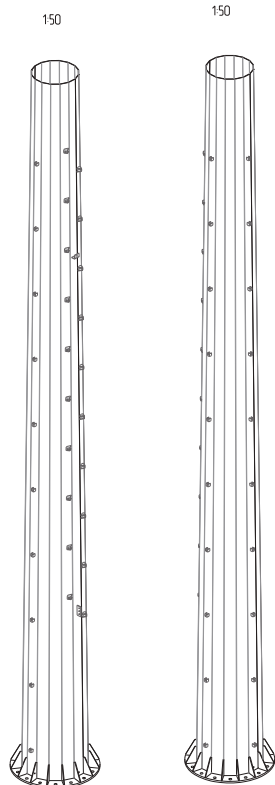
PJSC Avdiyivskiy Metal Contractions Plant in cooperation with specialized institutes have designed conical steel polygonal poles and masts for radiorelay lines with different antennas, projector masts and towers of various modifications. As anticorrosion is used: enamel, hot galvanizing, priming or else agreed with customer.

Can be produced according to typical or individual projects, from 3 to 160 meters high.





mast step (lower) 12010000
169.12.0100-00.1-1
overview with fasteners
120



- 1. * - help dimensions
- 2. unspecified limit deviation H12, h12+/- IT 12/2
- 3. weld (5264-80)
- 4. coating (70)



Metal structures for civil and industrial construction

- metal constructions for stacks;
- cable overpass;
- support for pipelines;
- compensators (various frame size);
- containers, jars, containers, cyclones;
- platforms, ladders, fences for platforms and ladders;
- metal structures of cooling towers;
- crane beams;
- metal structures skeletons of industrial and civil buildings and structures, bridge engineering: columns, trusses, beams, communications, crossbars, etc.;
- embedded spherical and a saddle-like steel washer.
- manufacturing products of any complexity according to customers drawings. Project recycling: MC (metal construction) into MCD (metal construction detailed).





PJSC Avdiyivskiy Metal Contractions Plant

Metal structures for civil and industrial construction





Hard cross–armed poles

Are used for the suspension of the contact network of AC and DC electrified railways of 1520 mm track on a multipath lines and stations. The universality of this kind of structures allows electrifying the railway tracks, reducing the costs for assembly works.







Hot galvanizing

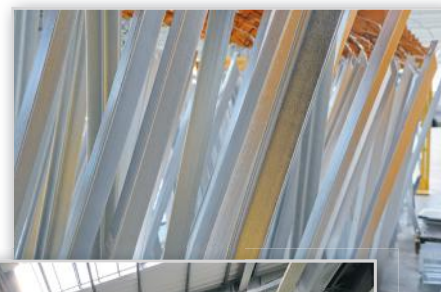
Hot galvanizing is the process wherein by immersion of metal articles in a hot zinc bath of molten zinc coating is formed on the surface of an article, performing function of corrosion protection.

The following manufacturing operations precede hot galvanizing: preliminary chemical preparation of metal products in degreasing baths for the further etching in hydrochloric acids, rinsing in water, processing in the fluxing bath, preheating and drying of galvanized products. The thickness of the coating according to GOST 9.307 varies, depending on the needs, from 70 to 120mm. The advantages of this coating are evident as it helps to protect the product from rust, improves its characteristics. The most obvious among them: aesthetic appearance and high wear-resistance which increases its endurance limit towards chemical and mechanical influences. This effect is achieved by the interaction of the molten steel with zinc that results in forming iron-zinc compounds on the surface of a prod-

uct. Thus changing the chemical composition and structure of the surface layer of zinc.

Experience shows that life products of so coated products may constitute up to 50 years without visible damage which makes hot galvanized products indispensable for aggressive and difficult climatic conditions. It is important for the energy sector, industrial and civil construction, transportation, municipal services.

Taking into account advantage of this type of coating of metal products management of PJSC Avdiyivsky Metal Contractions Plant has decided to expand the range of services provided to our customers and run their own shop for galvanizing, which carries out this type of work. It allowed to arrange full circle output. Now the plant is working on hot galvanizing of elements of structural steel poles, traverse of concrete supports and constructions of the open switching, sections of polygonal poles, light poles and other products up to 2800 x 1600 x 12500 mm.







PJSC Avdiyivskiy Metal Contractions Details Plant
Ukraine, Donetsk region, 86065, Avdeyevka, Mayakovskogo str., 94

+ 38 06236 3 3822
+ 38 050 348 5243
+ 38 062 363 2943
azmk@azmk.dn.ua

**Marketing and
Sales department**
+ 38 06236 3 3888
omc@azmk.dn.ua

**Material and technical
purchase department**
+ 38 062 363 21 22
omtc@azmk.dn.ua